

Recombinant

DGRmAb®

**FGL1 (DGR20886) Rabbit mAb (PBS Only)**

db14209-PBS

Package : 100µg

**Product Name** : FGL1 (DGR20886) Rabbit mAb (PBS Only)**Cat.No.:** db14209-PBS**Synonyms** : HFREP1; HP-041; LFIRE1; LFIRE-1**Application** : WB**Reactivity** : Human**Host species** : Rabbit**Background**

Fibrinogen-like 1 is a member of the fibrinogen family. This protein is homologous to the carboxy terminus of the fibrinogen beta- and gamma- subunits which contains the four conserved cysteines of fibrinogens and fibrinogen related proteins. However, this protein lacks the platelet-binding site, cross-linking region and a thrombin-sensitive site which are necessary for fibrin clot formation. This protein may play a role in the development of hepatocellular carcinomas. Four alternatively spliced transcript variants encoding the same protein exist for this gene. [provided by RefSeq, Jul 2008]

**Immunogen**

A synthetic peptide of human FGL1

**Gene ID**

2267

**Swiss Prot**

Q08830

**Synonyms**

HFREP1; HP-041; LFIRE1; LFIRE-1

**Reactivity**

Human

**Application**

WB

**Recommended dilution**

WB: 1:1000-1:5000

**Calculated MW**

36 kDa

**Observed MW**

36 kDa

**Host species**

Rabbit

**Clonality**

Monoclonal

**Clonality No.**

DGR20886

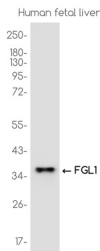
**Isotype**

IgG

**Purity**

Affinity Purification

Conjugation	Un-conjugated
Concentration	1 mg/ml
Formulation	PBS Only
Storage Stability	Store at -20°C. Recommended to aliquot into single-use vials. Supplied in 1X PBS (pH 7.4). BSA and Azide Free. Stable for 12 months from date of receipt.



Western blot analysis of extracts from Human fetal liver tissue using [db14209](#)