

Recombinant

DGRmAb®

Notch1 (DGR12951) Rabbit mAb (PBS Only)

db14172-PBS

Package : 10µg 100µg

Product Name : Notch1 (DGR12951) Rabbit mAb (PBS Only)**Cat.No.:** db14172-PBS**Synonyms** : hN1; AOS5; TAN1; AOVD1**Application** : WB, IHC-P, ICC/IF, FC**Reactivity** : Human,Mouse**Host species** : Rabbit**Background**

This gene encodes a member of the NOTCH family of proteins. Members of this Type I transmembrane protein family share structural characteristics including an extracellular domain consisting of multiple epidermal growth factor-like (EGF) repeats, and an intracellular domain consisting of multiple different domain types. Notch signaling is an evolutionarily conserved intercellular signaling pathway that regulates interactions between physically adjacent cells through binding of Notch family receptors to their cognate ligands. The encoded preproprotein is proteolytically processed in the trans-Golgi network to generate two polypeptide chains that heterodimerize to form the mature cell-surface receptor. This receptor plays a role in the development of numerous cell and tissue types. Mutations in this gene are associated with aortic valve disease, Adams-Oliver syndrome, T-cell acute lymphoblastic leukemia, chronic lymphocytic leukemia, and head and neck squamous cell carcinoma. [provided by RefSeq, Jan 2016]

Immunogen

A synthetic peptide of human Notch1

Gene ID

4851

Swiss Prot

P46531

Synonyms

hN1; AOS5; TAN1; AOVD1

Reactivity

Human,Mouse

Application

WB, IHC-P, ICC/IF, FC

Calculated MW

273 kDa

Observed MW

120 kDa

Host species

Rabbit

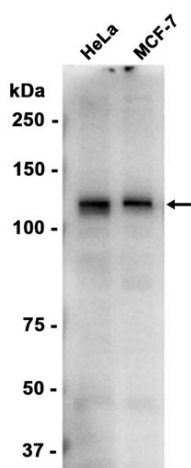
Clonality

Monoclonal

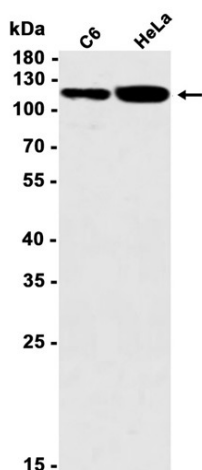
Clonality No.

DGR12951

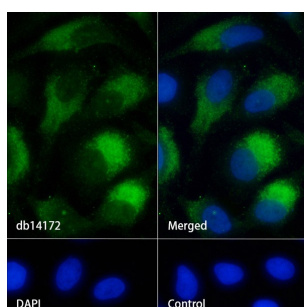
Isotype	IgG
Purity	Affinity Purification
Conjugation	Un-conjugated
Concentration	1 mg/mL
Formulation	PBS Only
Storage Stability	Store at -20°C. Recommended to aliquot into single-use vials. Supplied in 1X PBS (pH 7.4). BSA and Azide Free. Stable for 12 months from date of receipt.



Western blot analysis of extracts from HeLa, MCF-7 cells using db14172 at 1:1000.



Western blot analysis of extracts from C6, HeLa cells using db14172 at 1:1000.



Immunofluorescence analysis of HeLa cells labelling Notch1 with db14172.

The cells were fixed with 4% PFA (10min, RT) followed by treatment with 0.1% Triton X-100 (10min, RT), and blocked in 1% BSA/10% normal goat serum/0.3M glycine in 0.1% PBS-Tween 20 for 1h. The cells were then incubate with db14172 (1:100) at room temperature for 1h, followed by a further incubation at room temperature for 45min with Goat Anti Rabbit IgG (H+L)-AF488 (db10005, shown in green). Nuclear DNA was labeled in blue with DAPI.

Control: Secondary antibody only.