

Recombinant

DGRmAb®

**ATG16L1 (DGR14867) Rabbit mAb (PBS Only)**

db13865-PBS

Package : 100µg

**Product Name** : ATG16L1 (DGR14867) Rabbit mAb (PBS Only)**Cat.No.:** db13865-PBS**Synonyms** : IBD10; WDR30; APG16L; ATG16A; ATG16L**Application** : WB, IHC-P**Reactivity** : Human,Mouse,Rat**Host species** : Rabbit**Background**

The protein encoded by this gene is part of a large protein complex that is necessary for autophagy, the major process by which intracellular components are targeted to lysosomes for degradation. Defects in this gene are a cause of susceptibility to inflammatory bowel disease type 10 (IBD10). Several transcript variants encoding different isoforms have been found for this gene. [provided by RefSeq, Jun 2010]

**Immunogen**

Recombinant protein of human ATG16L1

**Gene ID**

55054

**Swiss Prot**

Q676U5

**Synonyms**

IBD10; WDR30; APG16L; ATG16A; ATG16L

**Reactivity**

Human,Mouse,Rat

**Application**

WB, IHC-P

**Calculated MW**

68 kDa

**Observed MW**

66, 68 kDa

**Host species**

Rabbit

**Clonality**

Monoclonal

**Clonality No.**

DGR14867

**Isotype**

IgG

**Purity**

Affinity Purification

**Conjugation**

Un-conjugated

**Concentration**

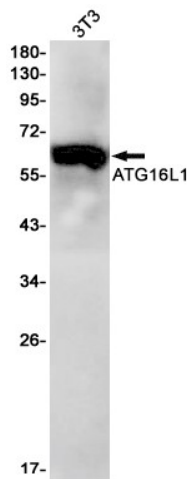
1 mg/ml

Formulation

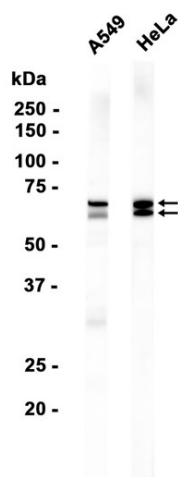
PBS Only

Storage Stability

Store at -20°C. Recommended to aliquot into single-use vials. Supplied in 1X PBS (pH 7.4). BSA and Azide Free. Stable for 12 months from date of receipt.



Western blot detection of ATG16L1 in 3T3 cell lysates using ATG16L1 antibody(1:1000 diluted).



Western blot analysis of extracts from A549, HeLa cells using [db13865](#)