

Recombinant

DGRmAb®

**BACE1 (DGR16149) Rabbit mAb (PBS Only)**

db13283-PBS

Package : 10µg 100µg

**Product Name** : BACE1 (DGR16149) Rabbit mAb (PBS Only)**Cat.No.:** db13283-PBS**Synonyms** : ASP2; Bace; C76936**Application** : WB, IHC-P, IP**Reactivity** : Human,Mouse,Rat**Host species** : Rabbit**Background**

This gene encodes a member of the peptidase A1 family of aspartic proteases. Alternative splicing results in multiple transcript variants, at least one of which encodes a preproprotein that is proteolytically processed to generate the mature protease. This transmembrane protease catalyzes the first step in the formation of amyloid beta peptide from amyloid precursor protein. Amyloid beta peptides are the main constituent of amyloid beta plaques, which accumulate in the brains of human Alzheimer's disease patients. Homozygous knockout mice for this gene exhibit a wide range of nervous system defects, growth retardation, metabolic abnormalities, and increased neonatal lethality. [provided by RefSeq, Nov 2015]

**Immunogen**

Recombinant protein of mouse BACE1

**Gene ID**

23821

**Swiss Prot**

P56818

**Synonyms**

ASP2; Bace; C76936

**Reactivity**

Human,Mouse,Rat

**Application**

WB, IHC-P, IP

**Calculated MW**

56 kDa

**Observed MW**

70 kDa

**Host species**

Rabbit

**Clonality**

Monoclonal

**Clonality No.**

DGR16149

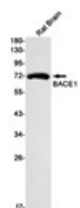
**Isotype**

IgG

**Purity**

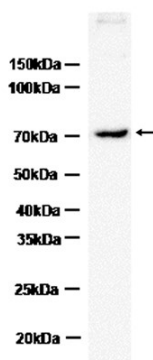
Affinity Purification

<b>Conjugation</b>	Un-conjugated
<b>Concentration</b>	1 mg/mL
<b>Formulation</b>	PBS Only
<b>Storage Stability</b>	Store at -20°C. Recommended to aliquot into single-use vials. Supplied in 1X PBS (pH 7.4). BSA and Azide Free. Stable for 12 months from date of receipt.



Western blot detection of BACE1 in Rat Brain lysates using BACE1 antibody(1:1000 diluted).

Mouse brain



Western blot analysis of extracts from Mouse brain tissue using db13283 at 1:1000.