

Recombinant

DGRmAb®

VEGFD (DGR15699) Rabbit mAb (PBS Only)

db13161-PBS

Package : 100µg

Product Name : VEGFD (DGR15699) Rabbit mAb (PBS Only)**Cat.No.:** db13161-PBS**Synonyms :** FIGF; VEGF-D**Application :** WB, IHC-P, ICC/IF, FC**Reactivity :** Human,Mouse,Rat**Host species :** Rabbit**Background**

The protein encoded by this gene is a member of the platelet-derived growth factor/vascular endothelial growth factor (PDGF/VEGF) family and is active in angiogenesis, lymphangiogenesis, and endothelial cell growth. This secreted protein undergoes a complex proteolytic maturation, generating multiple processed forms which bind and activate VEGFR-2 and VEGFR-3 receptors. This protein is structurally and functionally similar to vascular endothelial growth factor C. Read-through transcription has been observed between this locus and the upstream PIR (GeneID 8544) locus. [provided by RefSeq, Feb 2011]

Immunogen

A synthetic peptide of human VEGFD

Gene ID

2277

Swiss Prot

O43915

Synonyms

FIGF; VEGF-D

Reactivity

Human,Mouse,Rat

Application

WB, IHC-P, ICC/IF, FC

Recommended dilution

WB: 1:1000-1:5000

IHC-P: 1:100-1:1000

ICC/IF: 1:100-1:200

FC: 1:100-1:500

Calculated MW

40 kDa

Observed MW

40 kDa

Host species

Rabbit

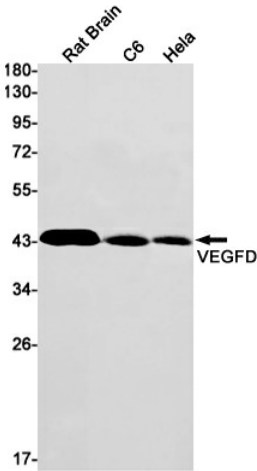
Clonality

Monoclonal

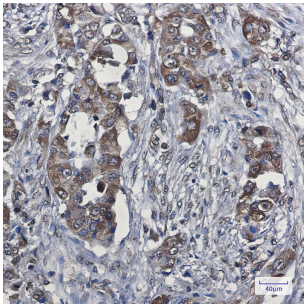
Clonality No.

DGR15699

Isotype	IgG
Purity	Affinity Purification
Conjugation	Un-conjugated
Concentration	1 mg/ml
Formulation	PBS Only
Storage Stability	Store at -20°C. Recommended to aliquot into single-use vials. Supplied in 1X PBS (pH 7.4). BSA and Azide Free. Stable for 12 months from date of receipt.



Western blot detection of VEGFD in Rat Brain,C6,HeLa cell lysates using VEGFD antibody(1:1000 diluted).



Immunohistochemical analysis of paraffin-embedded human lung cancer using [db13161](#)