

Recombinant

DGRmAb®

Lumican (DGR19074) Rabbit mAb (PBS Only)

db13159-PBS

Package : 100µg

Product Name : Lumican (DGR19074) Rabbit mAb (PBS Only)**Cat.No.:** db13159-PBS**Synonyms** : LDC; SLRR2D**Application** : WB, IHC-P, ICC/IF, FC**Reactivity** : Human,Mouse,Rat**Host species** : Rabbit**Background**

This gene encodes a member of the small leucine-rich proteoglycan (SLRP) family that includes decorin, biglycan, fibromodulin, keratocan, epiphykan, and osteoglycin. In these bifunctional molecules, the protein moiety binds collagen fibrils and the highly charged hydrophilic glycosaminoglycans regulate interfibrillar spacings. Lumican is the major keratan sulfate proteoglycan of the cornea but is also distributed in interstitial collagenous matrices throughout the body. Lumican may regulate collagen fibril organization and circumferential growth, corneal transparency, and epithelial cell migration and tissue repair. [provided by RefSeq, Jul 2008]

Immunogen

A synthetic peptide of human Lumican

Gene ID

4060

Swiss Prot

P51884

Synonyms

LDC; SLRR2D

Reactivity

Human,Mouse,Rat

Application

WB, IHC-P, ICC/IF, FC

Recommended dilution

WB: 1:1000-1:5000

IHC-P: 1:50-1:100

ICC/IF: 1:200-1:500

FC: 1:100-1:200

Calculated MW

38 kDa

Observed MW

60 kDa

Host species

Rabbit

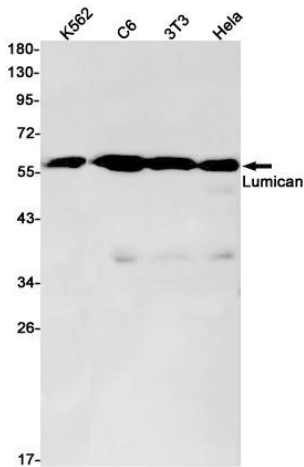
Clonality

Monoclonal

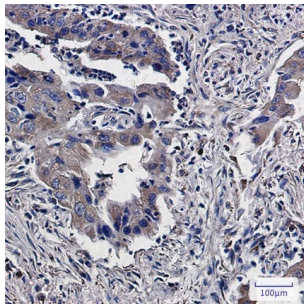
Clonality No.

DGR19074

Isotype	IgG
Purity	Affinity Purification
Conjugation	Un-conjugated
Concentration	1 mg/ml
Formulation	PBS Only
Storage Stability	Store at -20°C. Recommended to aliquot into single-use vials. Supplied in 1X PBS (pH 7.4). BSA and Azide Free. Stable for 12 months from date of receipt.



Western blot detection of Lumican in K562,C6,3T3,Hela cell lysates using Lumican antibody(1:1000 diluted).



Immunohistochemical analysis of paraffin-embedded human lung cancer using [db13159](#)