

Recombinant

DGRmAb®

SAE1 (DGR15100) Rabbit mAb (PBS Only)

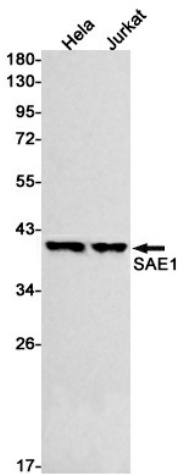
db13122-PBS

Package : 100µg

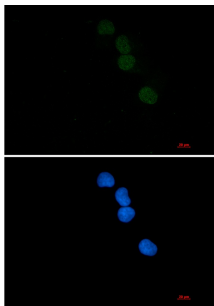
Product Name : SAE1 (DGR15100) Rabbit mAb (PBS Only)**Cat.No.:** db13122-PBS**Synonyms :** AOS1; SUA1; UBLE1A; HSPC140**Application :** WB, ICC/IF**Reactivity :** Human,Mouse**Host species :** Rabbit

Background	Posttranslational modification of proteins by the addition of the small protein SUMO (see SUMO1; MIM 601912), or sumoylation, regulates protein structure and intracellular localization. SAE1 and UBA2 (MIM 613295) form a heterodimer that functions as a SUMO-activating enzyme for the sumoylation of proteins (Okuma et al., 1999 [PubMed 9920803]).[supplied by OMIM, Mar 2010]
Immunogen	A synthetic peptide of human SAE1
Gene ID	10055
Swiss Prot	Q9UBE0
Synonyms	AOS1; SUA1; UBLE1A; HSPC140
Reactivity	Human,Mouse
Application	WB, ICC/IF
Recommended dilution	WB: 1:1000-1:5000 ICC/IF: 1:100
Calculated MW	39 kDa
Observed MW	39 kDa
Host species	Rabbit
Clonality	Monoclonal
Clonality No.	DGR15100
Isotype	IgG
Purity	Affinity Purification
Conjugation	Un-conjugated

Concentration	1 mg/ml
Formulation	PBS Only
Storage Stability	Store at -20°C. Recommended to aliquot into single-use vials. Supplied in 1X PBS (pH 7.4). BSA and Azide Free. Stable for 12 months from date of receipt.



Western blot detection of SAE1 in HeLa, Jurkat cell lysates using SAE1 antibody (1:500 diluted).



Immunofluorescent analysis of HeLa cells using [db13122](#)