

Recombinant

DGRmAb®

CRM1 (DGR19917) Rabbit mAb (PBS Only)

db12971-PBS

Package : 100µg

Product Name : CRM1 (DGR19917) Rabbit mAb (PBS Only)**Cat.No.:** db12971-PBS**Synonyms :** emb; CRM1; exp1**Application :** WB, ICC/IF, FC**Reactivity :** Human,Mouse,Rat**Host species :** Rabbit**Background**

This cell-cycle-regulated gene encodes a protein that mediates leucine-rich nuclear export signal (NES)-dependent protein transport. The protein specifically inhibits the nuclear export of Rev and U snRNAs. It is involved in the control of several cellular processes by controlling the localization of cyclin B, MPAK, and MAPKAP kinase 2. This protein also regulates NFAT and AP-1. [provided by RefSeq, Jan 2015]

Immunogen

A synthetic peptide of human CRM1

Gene ID

7514

Swiss Prot

O14980

Synonyms

emb; CRM1; exp1

Reactivity

Human,Mouse,Rat

Application

WB, ICC/IF, FC

Recommended dilution

WB: 1:1000

ICC/IF: 1:200-1:500

FC: 1:100-1:200

Calculated MW

123 kDa

Observed MW

123 kDa

Host species

Rabbit

Clonality

Monoclonal

Clonality No.

DGR19917

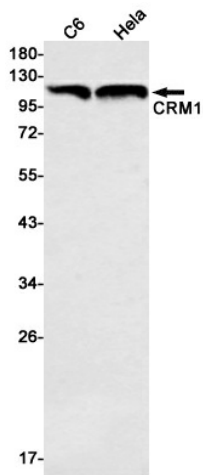
Isotype

IgG

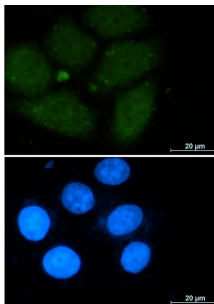
Purity

Affinity Purification

Conjugation	Un-conjugated
Concentration	1 mg/ml
Formulation	PBS Only
Storage Stability	Store at -20°C. Recommended to aliquot into single-use vials. Supplied in 1X PBS (pH 7.4). BSA and Azide Free. Stable for 12 months from date of receipt.



Western blot detection of CRM1 in C6,HeLa cell lysates using CRM1 antibody(1:1000 diluted).



Immunofluorescent analysis of A549 cells using [db12971](#)