

Recombinant

DGRmAb®

PEN2 (DGR32344) Rabbit mAb (PBS Only)

db12942-PBS

Package : 10µg 100µg

Product Name : PEN2 (DGR32344) Rabbit mAb (PBS Only)**Cat.No.:** db12942-PBS**Synonyms** : PEN2; PEN-2; MDS033; ACNINV2; MSTP064**Application** : WB, IHC-P, FC**Reactivity** : Human,Mouse,Rat**Host species** : Rabbit**Background**

Presenilins, which are components of the gamma-secretase protein complex, are required for intramembranous processing of some type I transmembrane proteins, such as the Notch proteins and the beta-amyloid precursor protein. Signaling by Notch receptors mediates a wide range of developmental cell fates. Processing of the beta-amyloid precursor protein generates neurotoxic amyloid beta peptides, the major component of senile plaques associated with Alzheimer's disease. This gene encodes a protein that is required for Notch pathway signaling, and for the activity and accumulation of gamma-secretase. Mutations resulting in haploinsufficiency for this gene cause familial acne inversa-2 (ACNINV2). Alternative splicing results in multiple transcript variants. [provided by RefSeq, Jul 2013]

Immunogen

A synthetic peptide of human PEN2

Gene ID

55851

Swiss Prot

Q9NZ42

Synonyms

PEN2; PEN-2; MDS033; ACNINV2; MSTP064

Reactivity

Human,Mouse,Rat

Application

WB, IHC-P, FC

Calculated MW

12 kDa

Observed MW

12 kDa

Host species

Rabbit

Clonality

Monoclonal

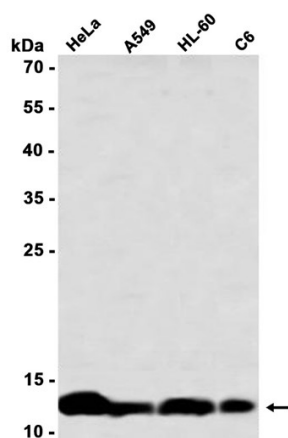
Clonality No.

DGR32344

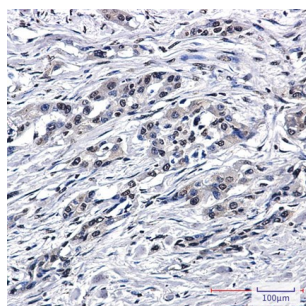
Isotype

IgG

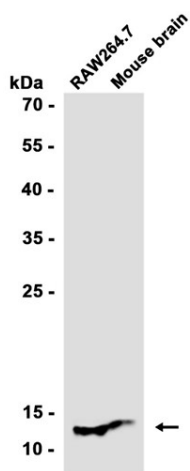
Purity	Affinity Purification
Conjugation	Un-conjugated
Concentration	1 mg/mL
Formulation	PBS Only
Storage Stability	Store at -20°C. Recommended to aliquot into single-use vials. Supplied in 1X PBS (pH 7.4). BSA and Azide Free. Stable for 12 months from date of receipt.



Western blot analysis of extracts from HeLa, A549, HL-60, C6 cells using [db12942](#) at 1:1000.



Immunohistochemical analysis of paraffin-embedded human lung cancer using [db12942](#) antibody.



Western blot analysis of extracts from RAW264.7 cells and Mouse brain tissue using [db12942](#) at 1:1000.