

Recombinant

DGRmAb®

**CD10 (DGR20689) Rabbit mAb (PBS Only)**

db12783-PBS

Package : 10µg 100µg

**Product Name** : CD10 (DGR20689) Rabbit mAb (PBS Only)

**Cat.No.:** db12783-PBS

**Synonyms** : NEP; SFE; CD10; CALLA; CMT2T; SCA43

**Application** : WB, IHC-P, ICC/IF, IP

**Reactivity** : Human,Mouse,Rat

**Host species** : Rabbit

**Background**

The protein encoded by this gene is a type II transmembrane glycoprotein and a common acute lymphocytic leukemia antigen that is an important cell surface marker in the diagnosis of human acute lymphocytic leukemia (ALL). The encoded protein is present on leukemic cells of pre-B phenotype, which represent 85% of cases of ALL. This protein is not restricted to leukemic cells, however, and is found on a variety of normal tissues. The protein is a neutral endopeptidase that cleaves peptides at the amino side of hydrophobic residues and inactivates several peptide hormones including glucagon, enkephalins, substance P, neurotensin, oxytocin, and bradykinin. [provided by RefSeq, Aug 2017]

**Immunogen**

A synthetic peptide of human CD10

**Gene ID**

4311

**Swiss Prot**

P08473

**Synonyms**

NEP; SFE; CD10; CALLA; CMT2T; SCA43

**Reactivity**

Human,Mouse,Rat

**Application**

WB, IHC-P, ICC/IF, IP

**Calculated MW**

86 kDa

**Observed MW**

100 kDa

**Host species**

Rabbit

**Clonality**

Monoclonal

**Clonality No.**

DGR20689

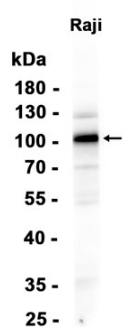
**Isotype**

IgG

**Purity**

Affinity Purification

<b>Conjugation</b>	Un-conjugated
<b>Concentration</b>	1 mg/mL
<b>Formulation</b>	PBS Only
<b>Storage Stability</b>	Store at -20°C. Recommended to aliquot into single-use vials. Supplied in 1X PBS (pH 7.4). BSA and Azide Free. Stable for 12 months from date of receipt.



Western blot analysis of extracts from Raji cells using [db12783](#) at 1:1000.