

Recombinant

DGRmAb®

KAT1 (DGR19782) Rabbit mAb (PBS Only)

db12046-PBS

Package : 10µg 100µg

Product Name : KAT1 (DGR19782) Rabbit mAb (PBS Only)**Cat.No.:** db12046-PBS**Synonyms** : KAT1**Application** : WB, IHC-P, ICC/IF, FC, IP**Reactivity** : Human,Mouse,Rat**Host species** : Rabbit**Background**

The protein encoded by this gene is a type B histone acetyltransferase (HAT) that is involved in the rapid acetylation of newly synthesized cytoplasmic histones, which are in turn imported into the nucleus for de novo deposition onto nascent DNA chains. Histone acetylation, particularly of histone H4, plays an important role in replication-dependent chromatin assembly. Specifically, this HAT can acetylate soluble but not nucleosomal histone H4 at lysines 5 and 12, and to a lesser degree, histone H2A at lysine 5. Alternatively spliced transcript variants have been identified for this gene. [provided by RefSeq, Jun 2009]

Immunogen

Recombinant protein of human KAT1

Gene ID

8520

Swiss Prot

O14929

Synonyms

KAT1

Reactivity

Human,Mouse,Rat

Application

WB, IHC-P, ICC/IF, FC, IP

Calculated MW

50 kDa

Observed MW

45 kDa

Host species

Rabbit

Clonality

Monoclonal

Clonality No.

DGR19782

Isotype

IgG

Purity

Affinity Purification

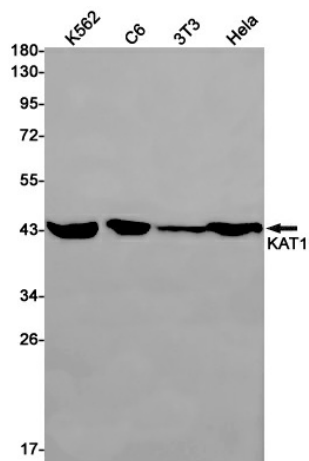
Conjugation

Un-conjugated

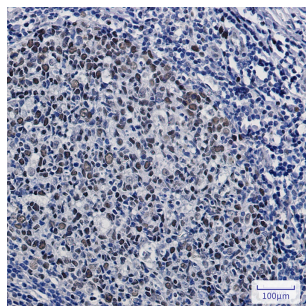
Concentration 1 mg/mL

Formulation PBS Only

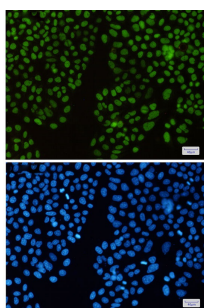
Storage Stability Store at -20°C. Recommended to aliquot into single-use vials. Supplied in 1X PBS (pH 7.4). BSA and Azide Free. Stable for 12 months from date of receipt.



Western blot detection of KAT1 in K562,C6,3T3,HeLa cell lysates using KAT1 antibody(1:1000 diluted).



Immunohistochemical analysis of paraffin-embedded human tonsil using db12046 antibody.



Immunofluorescent analysis of HeLa cells using db12046 antibody (green), and DAPI (blue).