

Recombinant

DGRmAb®

**Metabotropic Glutamate Receptor 2 (DGR18389) Rabbit mAb (PBS Only)**

db12007-PBS

Package : 100µg

**Product Name** : Metabotropic Glutamate Receptor 2 (DGR18389) Rabbit mAb (PBS Only)**Cat.No.:** db12007-PBS**Synonyms** : GLUR2; mGlu2; GPRC1B; MGLUR2**Application** : WB, IHC-P, ICC/IF, FC**Reactivity** : Human,Mouse,Rat**Host species** : Rabbit**Background**

L-glutamate is the major excitatory neurotransmitter in the central nervous system and activates both ionotropic and metabotropic glutamate receptors. Glutamatergic neurotransmission is involved in most aspects of normal brain function and can be perturbed in many neuropathologic conditions. The metabotropic glutamate receptors are a family of G protein-coupled receptors, that have been divided into 3 groups on the basis of sequence homology, putative signal transduction mechanisms, and pharmacologic properties. Group I includes GRM1 and GRM5 and these receptors have been shown to activate phospholipase C. Group II includes GRM2 and GRM3 while Group III includes GRM4, GRM6, GRM7 and GRM8. Group II and III receptors are linked to the inhibition of the cyclic AMP cascade but differ in their agonist selectivities. Several transcript variants encoding different isoforms have been found for this gene. [provided by RefSeq, Mar 2017]

**Immunogen**

A synthetic peptide of human Metabotropic Glutamate Receptor 2

**Gene ID**

2912

**Swiss Prot**

Q14416

**Synonyms**

GLUR2; mGlu2; GPRC1B; MGLUR2

**Reactivity**

Human,Mouse,Rat

**Application**

WB, IHC-P, ICC/IF, FC

**Recommended dilution**

WB: 1:2000-1:20000

IHC-P: 1:200-1:2000

ICC/IF: 1:200-1:500

FC: 1:50-1:100

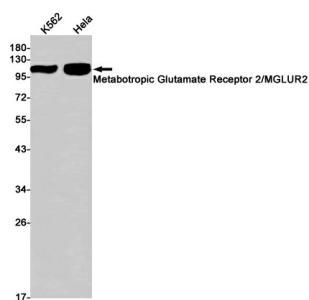
**Calculated MW**

99 kDa

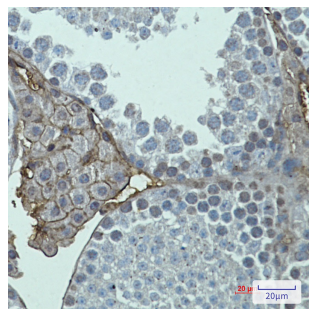
**Observed MW**

99 kDa

Host species	Rabbit
Clonality	Monoclonal
Clonality No.	DGR18389
Isotype	IgG
Purity	Affinity Purification
Conjugation	Un-conjugated
Concentration	1 mg/ml
Formulation	PBS Only
Storage Stability	Store at -20°C. Recommended to aliquot into single-use vials. Supplied in 1X PBS (pH 7.4). BSA and Azide Free. Stable for 12 months from date of receipt.



Western blot detection of Metabotropic Glutamate Receptor 2 in K562,HeLa cell lysates using Metabotropic Glutamate Receptor 2 antibody(1:1000 diluted).



Immunohistochemical analysis of paraffin-embedded mouse testis using [db12007](#)