

Recombinant

DGRmAb®

EZH2 (DGR31432) Rabbit mAb (PBS Only)

db11693-PBS

Package : 100µg

Product Name : EZH2 (DGR31432) Rabbit mAb (PBS Only)**Cat.No.:** db11693-PBS**Synonyms** : WVS; ENX1; KMT6; WVS2; ENX-1; EZH2b; KMT6A**Application** : WB**Reactivity** : Human**Host species** : Rabbit**Background**

This gene encodes a member of the Polycomb-group (PcG) family. PcG family members form multimeric protein complexes, which are involved in maintaining the transcriptional repressive state of genes over successive cell generations. This protein associates with the embryonic ectoderm development protein, the VAV1 oncoprotein, and the X-linked nuclear protein. This protein may play a role in the hematopoietic and central nervous systems. Multiple alternatively spliced transcript variants encoding distinct isoforms have been identified for this gene. [provided by RefSeq, Feb 2011]

Immunogen

Recombinant protein of human KMT6/EZH2

Gene ID

2146

Swiss Prot

Q15910

Synonyms

WVS; ENX1; KMT6; WVS2; ENX-1; EZH2b; KMT6A

Reactivity

Human

Application

WB

Recommended dilution

WB: 1:1000-1:5000

Calculated MW

85 kDa

Observed MW

98 kDa

Host species

Rabbit

Clonality

Monoclonal

Clonality No.

DGR31432

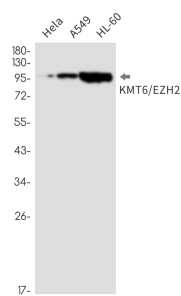
Isotype

IgG

Purity

Affinity Purification

Conjugation	Un-conjugated
Concentration	1 mg/ml
Formulation	PBS Only
Storage Stability	Store at -20°C. Recommended to aliquot into single-use vials. Supplied in 1X PBS (pH 7.4). BSA and Azide Free. Stable for 12 months from date of receipt.



Western blot detection of KMT6/EZH2 in HeLa,A549,HL-60 cell lysates using KMT6/EZH2 antibody(1:1000 diluted).