

Recombinant

DGRmAb®

## TGF alpha (DGR14329) Rabbit mAb (PBS Only)

db11614-PBS

Package : 10µg 100µg

**Product Name** : TGF alpha (DGR14329) Rabbit mAb (PBS Only)**Cat.No.:** db11614-PBS**Synonyms** : TFGA**Application** : WB, IHC-P, ICC/IF, IP**Reactivity** : Human**Host species** : Rabbit**Background**

This gene encodes a growth factor that is a ligand for the epidermal growth factor receptor, which activates a signaling pathway for cell proliferation, differentiation and development. This protein may act as either a transmembrane-bound ligand or a soluble ligand. This gene has been associated with many types of cancers, and it may also be involved in some cases of cleft lip/palate. Alternatively spliced transcript variants encoding different isoforms have been found for this gene. [provided by RefSeq, Sep 2011]

**Immunogen**

Recombinant protein of human TGF alpha

**Gene ID**

7039

**Swiss Prot**

P01135

**Synonyms**

TFGA

**Reactivity**

Human

**Application**

WB, IHC-P, ICC/IF, IP

**Calculated MW**

17 kDa

**Observed MW**

17 kDa

**Host species**

Rabbit

**Clonality**

Monoclonal

**Clonality No.**

DGR14329

**Isotype**

IgG

**Purity**

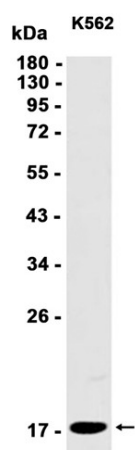
Affinity Purification

**Conjugation**

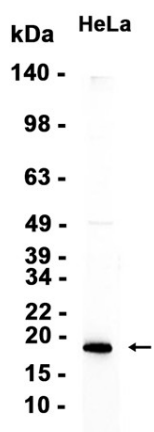
Un-conjugated

---

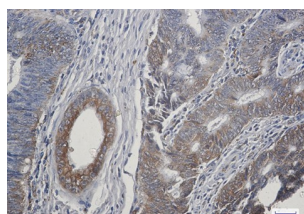
<b>Concentration</b>	1 mg/mL
<b>Formulation</b>	PBS Only
<b>Storage Stability</b>	Store at -20°C. Recommended to aliquot into single-use vials. Supplied in 1X PBS (pH 7.4). BSA and Azide Free. Stable for 12 months from date of receipt.



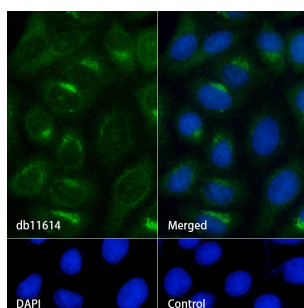
Western blot analysis of extracts from K562 cells using [db11614](#) at 1:1000.



Western blot analysis of extracts from HeLa cells using [db11614](#) at 1:1000.



Immunohistochemical analysis of paraffin-embedded human colon cancer using [db11614](#) antibody.



Immunofluorescence analysis of HepG2 cells labelling TGF alpha with [db11614](#).

The cells were fixed with cold 100% methanol (10min, 4°C) and blocked in 1% BSA/10% normal goat serum/0.3M glycine in 0.1% PBS-Tween 20 for 1h. The cells were then incubate with [db11614](#) (1:100) at room temperature for 1h, followed by a further incubation at room temperature for 45min with Goat Anti Rabbit IgG (H+L)-AF488 ([db10005](#), shown in green). Nuclear DNA was labeled in blue with DAPI.

Control: Secondary antibody only.