

Recombinant

DGRmAb®

**Smad3 (DGR12118) Rabbit mAb (PBS Only)**

db11519-PBS

Package : 100µg

**Product Name** : Smad3 (DGR12118) Rabbit mAb (PBS Only)**Cat.No.:** db11519-PBS**Synonyms** : LDS3; LDS1C; MADH3; JV15-2; HSPC193; HsT17436**Application** : WB, IHC-P, ICC/IF, FC**Reactivity** : Human,Mouse,Rat**Host species** : Rabbit**Background**

The protein encoded by this gene belongs to the SMAD, a family of proteins similar to the gene products of the Drosophila gene 'mothers against decapentaplegic' (Mad) and the C. elegans gene Sma. SMAD proteins are signal transducers and transcriptional modulators that mediate multiple signaling pathways. This protein functions as a transcriptional modulator activated by transforming growth factor-beta and is thought to play a role in the regulation of carcinogenesis. [provided by RefSeq, Apr 2009]

**Immunogen**

A synthetic peptide of human Smad3

**Gene ID**

4088

**Swiss Prot**

P84022

**Synonyms**

LDS3; LDS1C; MADH3; JV15-2; HSPC193; HsT17436

**Reactivity**

Human,Mouse,Rat

**Application**

WB, IHC-P, ICC/IF, FC

**Calculated MW**

48 kDa

**Observed MW**

52 kDa

**Host species**

Rabbit

**Clonality**

Monoclonal

**Clonality No.**

DGR12118

**Isotype**

IgG

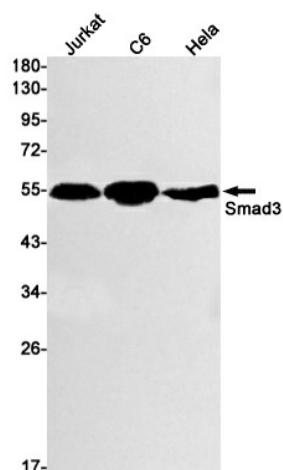
**Purity**

Affinity Purification

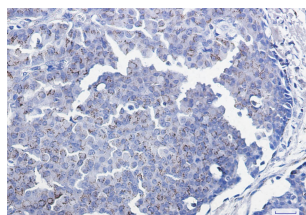
**Conjugation**

Un-conjugated

Concentration	1 mg/ml
Formulation	PBS Only
Storage Stability	Store at -20°C. Recommended to aliquot into single-use vials. Supplied in 1X PBS (pH 7.4). BSA and Azide Free. Stable for 12 months from date of receipt.



Western blot detection of Smad3 in Jurkat, C6, HeLa cell lysates using Smad3 antibody (1:1000 diluted).



Immunohistochemical analysis of paraffin-embedded human breast cancer tissue using [db11519](#)