

Recombinant

DGRmAb®

DDB1 (DGR31312) Rabbit mAb (PBS Only)

db11425-PBS

Package : 10µg 100µg

Product Name : DDB1 (DGR31312) Rabbit mAb (PBS Only)**Cat.No.:** db11425-PBS**Synonyms** : XPE; DDBA; XAP1; XPCE; XPE-BF; UV-DDB1**Application** : WB, IHC-P, ICC/IF**Reactivity** : Human,Mouse,Rat**Host species** : Rabbit**Background**

The protein encoded by this gene is the large subunit (p127) of the heterodimeric DNA damage-binding (DDB) complex while another protein (p48) forms the small subunit. This protein complex functions in nucleotide-excision repair and binds to DNA following UV damage. Defective activity of this complex causes the repair defect in patients with xeroderma pigmentosum complementation group E (XPE) - an autosomal recessive disorder characterized by photosensitivity and early onset of carcinomas. However, it remains for mutation analysis to demonstrate whether the defect in XPE patients is in this gene or the gene encoding the small subunit. In addition, Best vitelliform macular dystrophy is mapped to the same region as this gene on 11q, but no sequence alternations of this gene are demonstrated in Best disease patients. The protein encoded by this gene also functions as an adaptor molecule for the cullin 4 (CUL4) ubiquitin E3 ligase complex by facilitating the binding of substrates to this complex and the ubiquitination of proteins. [provided by RefSeq, May 2012]

Immunogen

A synthetic peptide of human DDB1

Gene ID

1642

Swiss Prot

Q16531

Synonyms

XPE; DDBA; XAP1; XPCE; XPE-BF; UV-DDB1

Reactivity

Human,Mouse,Rat

Application

WB, IHC-P, ICC/IF

Calculated MW

127 kDa

Observed MW

127 kDa

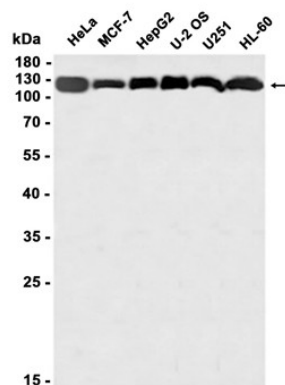
Host species

Rabbit

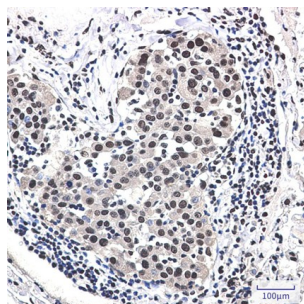
Clonality

Monoclonal

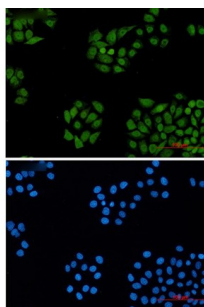
| | |
|--------------------------|---|
| Clonality No. | DGR31312 |
| Isotype | IgG |
| Purity | Affinity Purification |
| Conjugation | Un-conjugated |
| Concentration | 1 mg/mL |
| Formulation | PBS Only |
| Storage Stability | Store at -20°C. Recommended to aliquot into single-use vials. Supplied in 1X PBS (pH 7.4). BSA and Azide Free. Stable for 12 months from date of receipt. |



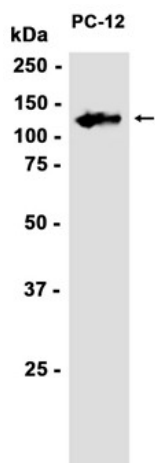
Western blot analysis of extracts from HeLa, MCF-7, HepG2, U-2 OS, U251, HL-60 cells using [db11425](#) at 1:1000.



Immunohistochemical analysis of paraffin-embedded human lung cancer using [db11425](#) antibody.



Immunofluorescent analysis of HeLa cells using [db11425](#) antibody (green), and DAPI (blue).



Western blot analysis of extracts from PC-12 cells using [db11425](#) at 1:1000.

