

Recombinant

DGRmAb®

## Casein Kinase 1 alpha (DGR14301) Rabbit mAb (PBS Only)

db11359-PBS

Package : 100µg

**Product Name** : Casein Kinase 1 alpha (DGR14301) Rabbit mAb (PBS Only)**Cat.No.:** db11359-PBS**Synonyms** : CK1; CK1a; CKIa; HLCDGP1; PRO2975; HEL-S-77p**Application** : WB, IP**Reactivity** : Human,Mouse,Rat**Host species** : Rabbit**Background**

Casein kinases are operationally defined by their preferential utilization of acidic proteins such as caseins as substrates. It can phosphorylate a large number of proteins. Participates in Wnt signaling. Phosphorylates CTNNB1 at 'Ser-45'. May phosphorylate PER1 and PER2. May play a role in segregating chromosomes during mitosis (PubMed:11955436, PubMed:1409656, PubMed:18305108). May play a role in keratin cytoskeleton disassembly and thereby, it may regulate epithelial cell migration (PubMed:23902688).

**Immunogen**

A synthetic peptide of human Casein Kinase 1 alpha

**Gene ID**

1452

**Swiss Prot**

P48729

**Synonyms**

CK1; CK1a; CKIa; HLCDGP1; PRO2975; HEL-S-77p

**Reactivity**

Human,Mouse,Rat

**Application**

WB, IP

**Recommended dilution**

WB: 1:1000  
IP: 1:20-1:50

**Calculated MW**

39 kDa

**Observed MW**

34 kDa

**Host species**

Rabbit

**Clonality**

Monoclonal

**Clonality No.**

DGR14301

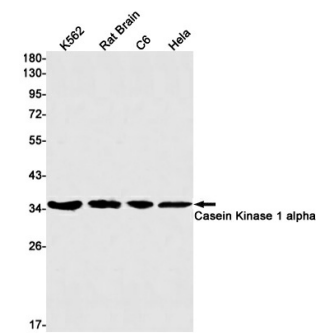
**Isotype**

IgG

**Purity**

Affinity Purification

Conjugation	Un-conjugated
Concentration	1 mg/ml
Formulation	PBS Only
Storage Stability	Store at -20°C. Recommended to aliquot into single-use vials. Supplied in 1X PBS (pH 7.4). BSA and Azide Free. Stable for 12 months from date of receipt.



Western blot detection of Casein Kinase 1 alpha in K562,Rat Brain,C6,Hela cell lysates using Casein Kinase 1 alpha antibody(1:1000 diluted).