

Recombinant

DGRmAb®

EBF1 (DGR34339) Rabbit mAb (PBS Only)

db11305-PBS

Package : 100µg

Product Name : EBF1 (DGR34339) Rabbit mAb (PBS Only)**Cat.No.:** db11305-PBS**Synonyms** : EBF; COE1; OLF1; O/E-1**Application** : WB**Reactivity** : Human,Mouse,Rat**Host species** : Rabbit**Background**

Predicted to enable DNA-binding transcription activator activity, RNA polymerase II-specific and RNA polymerase II cis-regulatory region sequence-specific DNA binding activity. Predicted to be involved in positive regulation of transcription by RNA polymerase II. Predicted to act upstream of or within positive regulation of transcription, DNA-templated. Predicted to be located in nucleus. Predicted to be part of chromatin. [provided by Alliance of Genome Resources, Apr 2022]

Immunogen

A synthetic peptide of human EBF1

Gene ID

1879, 13591, 116543

Swiss Prot

Q9UH73, Q07802, Q63398

Synonyms

EBF; COE1; OLF1; O/E-1

Reactivity

Human,Mouse,Rat

Application

WB

Recommended dilution

WB: 1:1000-1:5000

Calculated MW

65 kDa

Observed MW

65 kDa

Host species

Rabbit

Clonality

Monoclonal

Clonality No.

DGR34339

Isotype

IgG

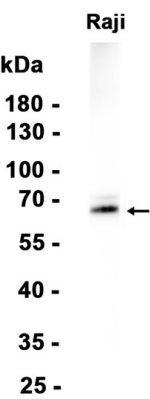
Purity

Affinity Purification

Conjugation

Un-conjugated

Concentration	1 mg/ml
Formulation	PBS Only
Storage Stability	Store at -20°C. Recommended to aliquot into single-use vials. Supplied in 1X PBS (pH 7.4). BSA and Azide Free. Stable for 12 months from date of receipt.



Western blot analysis of extracts from Raji cells using [db11305](#)