

Recombinant

DGRmAb®

SIX2 (DGR33505) Rabbit mAb (PBS Only)

db13130-PBS

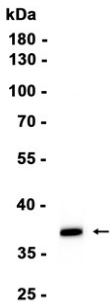
Package : 100µg

Product Name : SIX2 (DGR33505) Rabbit mAb (PBS Only)**Cat.No.:** db13130-PBS**Synonyms** : Sine oculis homeobox homolog 2**Application** : WB**Reactivity** : Human,Mouse,Rat**Host species** : Rabbit

Background	This gene is a member of the vertebrate gene family which encode proteins homologous to the Drosophila 'sine oculis' homeobox protein. The encoded protein is a transcription factor which, like other members of this gene family, may be involved in limb or eye development. [provided by RefSeq, Dec 2008]
Immunogen	A synthetic peptide of human SIX2
Gene ID	10736
Swiss Prot	Q9NPC8
Synonyms	Sine oculis homeobox homolog 2
Reactivity	Human,Mouse,Rat
Application	WB
Recommended dilution	WB: 1:1000-1:5000
Calculated MW	32 kDa
Observed MW	38 kDa
Host species	Rabbit
Clonality	Monoclonal
Clonality No.	DGR33505
Isotype	IgG
Purity	Affinity Purification
Conjugation	Un-conjugated
Concentration	1 mg/ml

Formulation	PBS Only
Storage Stability	Store at -20°C. Recommended to aliquot into single-use vials. Supplied in 1X PBS (pH 7.4). BSA and Azide Free. Stable for 12 months from date of receipt.

Mouse skeletal muscle



Western blot analysis of extracts from Mouse skeletal muscle tissue using [db13130](#)