

Recombinant

DGRmAb®

MAD2L1 (DGR36159) Rabbit mAb (PBS Only)

db16394-PBS

Package : 100µg

Product Name : MAD2L1 (DGR36159) Rabbit mAb (PBS Only)**Cat.No.:** db16394-PBS**Synonyms** : MAD2; HSMAD2**Application** : WB**Reactivity** : Human**Host species** : Rabbit**Background**

MAD2L1 is a component of the mitotic spindle assembly checkpoint that prevents the onset of anaphase until all chromosomes are properly aligned at the metaphase plate. MAD2L1 is related to the MAD2L2 gene located on chromosome 1. A MAD2 pseudogene has been mapped to chromosome 14. [provided by RefSeq, Jul 2008]

Immunogen

A synthetic peptide of human MAD2L1

Gene ID

4085

Swiss Prot

Q13257

Synonyms

MAD2; HSMAD2

Reactivity

Human

Application

WB

Recommended dilution

WB: 1:1000-1:20000

Calculated MW

24 kDa

Observed MW

24 kDa

Host species

Rabbit

Clonality

Monoclonal

Clonality No.

DGR36159

Isotype

IgG

Purity

Affinity Purification

Conjugation

Un-conjugated

Concentration

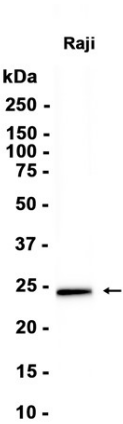
1 mg/ml

Formulation

PBS Only

Storage Stability

Store at -20°C. Recommended to aliquot into single-use vials. Supplied in 1X PBS (pH 7.4). BSA and Azide Free. Stable for 12 months from date of receipt.



Western blot analysis of extracts from Raji cells using [db16394](#)