

Recombinant

DGRmAb®

**Cyclin A2 (DGR32079) Rabbit mAb (PBS Only)**

db13588-PBS

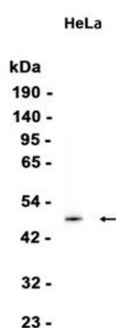
Package : 10µg 100µg

**Product Name** : Cyclin A2 (DGR32079) Rabbit mAb (PBS Only)**Cat.No.:** db13588-PBS**Synonyms** : CCN1; CCNA**Application** : WB, ICC/IF, FC, IP**Reactivity** : Human**Host species** : Rabbit

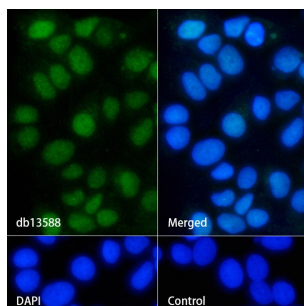
<b>Background</b>	The protein encoded by this gene belongs to the highly conserved cyclin family, whose members function as regulators of the cell cycle. This protein binds and activates cyclin-dependent kinase 2 and thus promotes transition through G1/S and G2/M. [provided by RefSeq, Aug 2016]
<b>Immunogen</b>	A synthetic peptide of human Cyclin A2
<b>Gene ID</b>	890
<b>Swiss Prot</b>	P20248
<b>Synonyms</b>	CCN1; CCNA
<b>Reactivity</b>	Human
<b>Application</b>	WB, ICC/IF, FC, IP
<b>Calculated MW</b>	49 kDa
<b>Observed MW</b>	49 kDa
<b>Host species</b>	Rabbit
<b>Clonality</b>	Monoclonal
<b>Clonality No.</b>	DGR32079
<b>Isotype</b>	IgG
<b>Purity</b>	Affinity Purification
<b>Conjugation</b>	Un-conjugated
<b>Concentration</b>	1 mg/mL
<b>Formulation</b>	PBS Only

**Storage Stability**

Store at -20°C. Recommended to aliquot into single-use vials. Supplied in 1X PBS (pH 7.4). BSA and Azide Free. Stable for 12 months from date of receipt.



Western blot analysis of extracts from HeLa cells using [db13588](#) at 1:1000.



Immunofluorescence analysis of MCF-7 cells labelling Cyclin A2 with [db13588](#).

The cells were fixed with 4% PFA (10min, RT) followed by treatment with 0.1% Triton X-100 (10min, RT), and blocked in 1% BSA/10% normal goat serum/0.3M glycine in 0.1% PBS-Tween 20 for 1h. The cells were then incubate with [db13588](#) (1:50) at room temperature for 1h, followed by a further incubation at room temperature for 45min with Goat Anti Rabbit IgG (H+L)-AF488 [db10005](#), shown in green). Nuclear DNA was labeled in blue with DAPI.

Control: Secondary antibody only.