

Recombinant

DGRmAb®

Phospho-PAK1/2/3 (Ser144/Ser141/Ser154) (DGR19432) Rabbit mAb (PBS Only)

db11225-PBS

Package : 100µg

Product Name : Phospho-PAK1/2/3 (Ser144/Ser141/Ser154) (DGR19432) Rabbit mAb (PBS Only)**Cat.No.:** db11225-PBS**Synonyms :** PAKalpha**Application :** WB, IHC-P, ICC/IF, FC, IP**Reactivity :** Human,Mouse,Rat**Host species :** Rabbit**Background**

This gene encodes a family member of serine/threonine p21-activating kinases, known as PAK proteins. These proteins are critical effectors that link RhoGTPases to cytoskeleton reorganization and nuclear signaling, and they serve as targets for the small GTP binding proteins Cdc42 and Rac. This specific family member regulates cell motility and morphology. Alternatively spliced transcript variants encoding different isoforms have been found for this gene. [provided by RefSeq, Apr 2010]

Immunogen

A synthetic phosphopeptide corresponding to residues surrounding Ser144 of human PAK1

Gene ID

5058

Swiss Prot

O75914

Synonyms

PAKalpha

Reactivity

Human,Mouse,Rat

Application

WB, IHC-P, ICC/IF, FC, IP

Recommended dilution

WB: 1:2000-1:20000

IHC-P: 1:100-1:500

ICC/IF: 1:200-1:500

FC: 1:100

IP: 1:20-1:50

Calculated MW

61 kDa

Observed MW

61 kDa

Host species

Rabbit

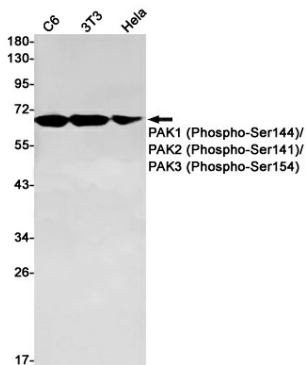
Clonality

Monoclonal

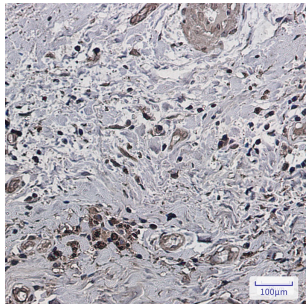
Clonality No.

DGR19432

Isotype	IgG
Purity	Affinity Purification
Conjugation	Un-conjugated
Concentration	1 mg/ml
Formulation	PBS Only
Storage Stability	Store at -20°C. Recommended to aliquot into single-use vials. Supplied in 1X PBS (pH 7.4). BSA and Azide Free. Stable for 12 months from date of receipt.



Western blot detection of PAK1 (Phospho-Ser144)/PAK2 (Phospho-Ser141)/PAK3 (Phospho-Ser154) in C6,3T3,HeLa cell lysates using [db11225](#)(1:1000 diluted).



Immunohistochemical analysis of paraffin-embedded human breast cancer using [db11225](#)