

Recombinant

DGRmAb®

Phospho-EGFR (Tyr1173) (DGR32135) Rabbit mAb (PBS Only)

db11285-PBS

Package : 100µg

Product Name : Phospho-EGFR (Tyr1173) (DGR32135) Rabbit mAb (PBS Only)**Cat.No.:** db11285-PBS**Synonyms** : ERBB; HER1; mENA; ERBB1; PIG61; NISBD2**Application** : WB, ICC/IF, FC**Reactivity** : Human**Host species** : Rabbit**Background**

The protein encoded by this gene is a transmembrane glycoprotein that is a member of the protein kinase superfamily. This protein is a receptor for members of the epidermal growth factor family. EGFR is a cell surface protein that binds to epidermal growth factor. Binding of the protein to a ligand induces receptor dimerization and tyrosine autophosphorylation and leads to cell proliferation. Mutations in this gene are associated with lung cancer. EGFR is a component of the cytokine storm which contributes to a severe form of coronavirus disease 2019 (COVID-19) resulting from infection with severe acute respiratory syndrome coronavirus-2 (SARS-CoV-2). [provided by RefSeq, Jun 2020]

Immunogen

A synthetic phosphopeptide corresponding to residues surrounding Tyr1173 of human EGFR

Gene ID

1956

Swiss Prot

P00533

Synonyms

ERBB; HER1; mENA; ERBB1; PIG61; NISBD2

Reactivity

Human

Application

WB, ICC/IF, FC

Recommended dilutionWB: 1:1000
ICC/IF: 1:20-1:50
FC: 1:20-1:50**Calculated MW**

134 kDa

Observed MW

175 kDa

Host species

Rabbit

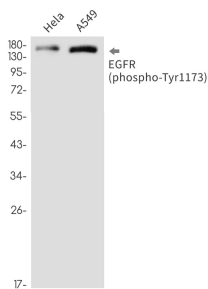
Clonality

Monoclonal

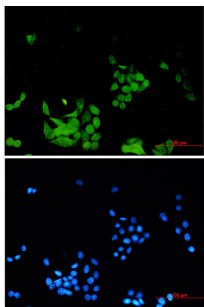
Clonality No.

DGR32135

Isotype	IgG
Purity	Affinity Purification
Conjugation	Un-conjugated
Concentration	1 mg/ml
Formulation	PBS Only
Storage Stability	Store at -20°C. Recommended to aliquot into single-use vials. Supplied in 1X PBS (pH 7.4). BSA and Azide Free. Stable for 12 months from date of receipt.



Western blot detection of EGFR (phospho-Tyr1173) in HeLa,A549 cell lysates using [db11285](#)(1:1000 diluted).



Immunofluorescent analysis of HeLa cells using [db11285](#)