

Recombinant

DGRmAb®

## Phospho-Tau (Ser202/Thr205) (DGR14421) Rabbit mAb (PBS Only)

db12694-PBS

Package : 10µg 100µg

**Product Name** : Phospho-Tau (Ser202/Thr205) (DGR14421) Rabbit mAb (PBS Only)**Cat.No.:** db12694-PBS**Synonyms** : TAU; MSTD; PPND; DDPAC; MAPTL; MTBT1; MTBT2; FTDP-17; PPP1R103**Application** : WB, IP**Reactivity** : Human**Host species** : Rabbit**Background**

This gene encodes the microtubule-associated protein tau (MAPT) whose transcript undergoes complex, regulated alternative splicing, giving rise to several mRNA species. MAPT transcripts are differentially expressed in the nervous system, depending on stage of neuronal maturation and neuron type. MAPT gene mutations have been associated with several neurodegenerative disorders such as Alzheimer's disease, Pick's disease, frontotemporal dementia, cortico-basal degeneration and progressive supranuclear palsy. [provided by RefSeq, Jul 2008]

**Immunogen**

A synthetic phosphopeptide corresponding to residues surrounding Ser202/Thr205 of human Tau

**Gene ID**

4137

**Swiss Prot**

P10636

**Synonyms**

TAU; MSTD; PPND; DDPAC; MAPTL; MTBT1; MTBT2; FTDP-17; PPP1R103

**Reactivity**

Human

**Application**

WB, IP

**Calculated MW**

79 kDa

**Observed MW**

50-80 kDa

**Host species**

Rabbit

**Clonality**

Monoclonal

**Clonality No.**

DGR14421

**Isotype**

IgG

**Purity**

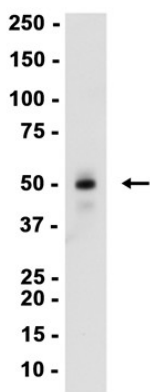
Affinity Purification

**Conjugation**

Un-conjugated

<b>Concentration</b>	1 mg/mL
<b>Formulation</b>	PBS Only
<b>Storage Stability</b>	Store at -20°C. Recommended to aliquot into single-use vials. Supplied in 1X PBS (pH 7.4). BSA and Azide Free. Stable for 12 months from date of receipt.

Human hippocampus  
kDa



Western blot analysis of extracts from Human hippocampus tissue using [db12694](#) at 1:1000.