

Recombinant

DGRmAb®

Phospho-PKC zeta/lambda (Thr410/Thr412) (DGR32134) Rabbit mAb (PBS Only)

db13764-PBS

Package : 10µg 100µg

Product Name : Phospho-PKC zeta/lambda (Thr410/Thr412) (DGR32134) Rabbit mAb (PBS Only)**Cat.No.:** db13764-PBS**Synonyms** : PKCC; PKCG; SCA14; PKCI(3); PKCgamma; PKC-gamma**Application** : WB, IHC-P**Reactivity** : Human,Mouse,Rat**Host species** : Rabbit**Background**

Protein kinase C (PKC) is a family of serine- and threonine-specific protein kinases that can be activated by calcium and second messenger diacylglycerol. PKC family members phosphorylate a wide variety of protein targets and are known to be involved in diverse cellular signaling pathways. PKC also serve as major receptors for phorbol esters, a class of tumor promoters. Each member of the PKC family has a specific expression profile and is believed to play distinct roles in cells. The protein encoded by this gene is one of the PKC family members. This protein kinase is expressed solely in the brain and spinal cord and its localization is restricted to neurons. It has been demonstrated that several neuronal functions, including long term potentiation (LTP) and long term depression (LTD), specifically require this kinase. Knockout studies in mice also suggest that this kinase may be involved in neuropathic pain development. Defects in this protein have been associated with neurodegenerative disorder spinocerebellar ataxia-14 (SCA14). Two transcript variants encoding different isoforms have been found for this gene. [provided by RefSeq, Oct 2015]

Immunogen

A synthetic phosphopeptide corresponding to residues surrounding Thr410 of human PKC zeta

Gene ID

5582,5584,5590

Swiss Prot

P05129,P41743,Q05513

Synonyms

PKCC; PKCG; SCA14; PKCI(3); PKCgamma; PKC-gamma

Reactivity

Human,Mouse,Rat

Application

WB, IHC-P

Calculated MW

68 kDa

Observed MW

76 kDa

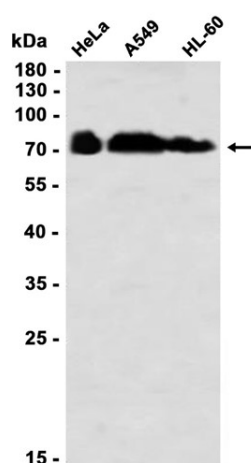
Host species

Rabbit

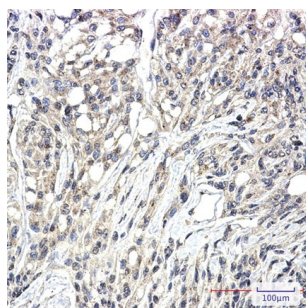
Clonality

Monoclonal

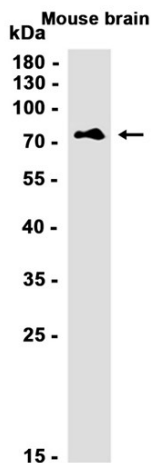
Clonality No.	DGR32134
Isotype	IgG
Purity	Affinity Purification
Conjugation	Un-conjugated
Concentration	1 mg/mL
Formulation	PBS Only
Storage Stability	Store at -20°C. Recommended to aliquot into single-use vials. Supplied in 1X PBS (pH 7.4). BSA and Azide Free. Stable for 12 months from date of receipt.



Western blot analysis of extracts from HeLa, A549, HL-60 cells using db13764 at 1:1000.



Immunohistochemical analysis of paraffin-embedded human Brain using db13764 antibody.



Western blot analysis of extracts from Mouse brain tissue using db13764 at 1:1000.

