

Recombinant

DGRmAb®

Phospho-Smad3 (Ser423/Ser425) (DGR12280) Rabbit mAb (PBS Only)

db13792-PBS

Package : 10µg 100µg

Product Name : Phospho-Smad3 (Ser423/Ser425) (DGR12280) Rabbit mAb (PBS Only)**Cat.No.:** db13792-PBS**Synonyms** : LDS3; LDS1C; MADH3; JV15-2; HSPC193; HsT17436**Application** : WB, IHC-P, ICC/IF**Reactivity** : Human,Mouse**Host species** : Rabbit**Background**

The protein encoded by this gene belongs to the SMAD, a family of proteins similar to the gene products of the Drosophila gene 'mothers against decapentaplegic' (Mad) and the C. elegans gene Sma. SMAD proteins are signal transducers and transcriptional modulators that mediate multiple signaling pathways. This protein functions as a transcriptional modulator activated by transforming growth factor-beta and is thought to play a role in the regulation of carcinogenesis. [provided by RefSeq, Apr 2009]

Immunogen

A synthetic phosphopeptide corresponding to residues surrounding Ser423/Ser425 of human Smad3

Gene ID

4088

Swiss Prot

P84022

Synonyms

LDS3; LDS1C; MADH3; JV15-2; HSPC193; HsT17436

Reactivity

Human,Mouse

Application

WB, IHC-P, ICC/IF

Calculated MW

48 kDa

Observed MW

52 kDa

Host species

Rabbit

Clonality

Monoclonal

Clonality No.

DGR12280

Isotype

IgG

Purity

Affinity Purification

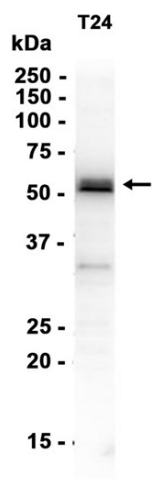
Conjugation

Un-conjugated

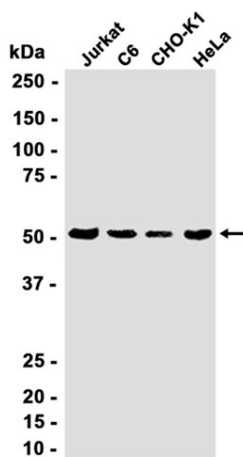
Concentration 1 mg/mL

Formulation PBS Only

Storage Stability Store at -20°C. Recommended to aliquot into single-use vials. Supplied in 1X PBS (pH 7.4). BSA and Azide Free. Stable for 12 months from date of receipt.



Western blot analysis of extracts from T24 cells using [db13792](#) at 1:1000.



Western blot analysis of extracts from Jurkat, C6, CHO-K1, HeLa cells using [db13792](#) at 1:1000.