

Recombinant

DGRmAb®

**Phospho-MCM2 (Ser40) (DGR32310) Rabbit mAb (PBS Only)**

db14023-PBS

Package : 10µg 100µg

**Product Name** : Phospho-MCM2 (Ser40) (DGR32310) Rabbit mAb (PBS Only)**Cat.No.:** db14023-PBS**Synonyms** : BM28; CCNL1; CDCL1; cdc19; DFNA70; D3S3194; MITOTIN**Application** : WB, IHC-P**Reactivity** : Human,Mouse,Rat**Host species** : Rabbit**Background**

The protein encoded by this gene is one of the highly conserved mini-chromosome maintenance proteins (MCM) that are involved in the initiation of eukaryotic genome replication. The hexameric protein complex formed by MCM proteins is a key component of the pre-replication complex (pre\_RC) and may be involved in the formation of replication forks and in the recruitment of other DNA replication related proteins. This protein forms a complex with MCM4, 6, and 7, and has been shown to regulate the helicase activity of the complex. This protein is phosphorylated, and thus regulated by, protein kinases CDC2 and CDC7. Multiple alternatively spliced transcript variants have been found, but the full-length nature of some variants has not been defined. [provided by RefSeq, Oct 2012]

**Immunogen**

A synthetic phosphopeptide corresponding to residues surrounding Ser40 of human MCM2

**Gene ID**

4171

**Swiss Prot**

P49736

**Synonyms**

BM28; CCNL1; CDCL1; cdc19; DFNA70; D3S3194; MITOTIN

**Reactivity**

Human,Mouse,Rat

**Application**

WB, IHC-P

**Calculated MW**

102 kDa

**Observed MW**

125 kDa

**Host species**

Rabbit

**Clonality**

Monoclonal

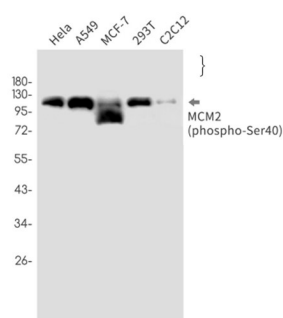
**Clonality No.**

DGR32310

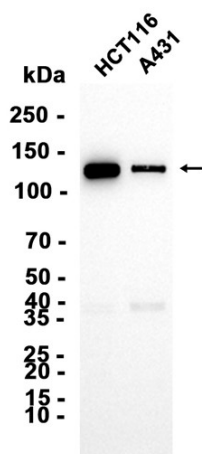
**Isotype**

IgG

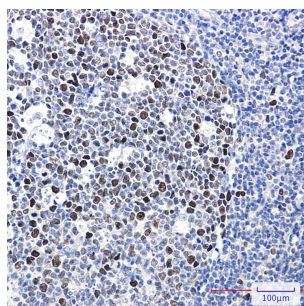
<b>Purity</b>	Affinity Purification
<b>Conjugation</b>	Un-conjugated
<b>Concentration</b>	1 mg/mL
<b>Formulation</b>	PBS Only
<b>Storage Stability</b>	Store at -20°C. Recommended to aliquot into single-use vials. Supplied in 1X PBS (pH 7.4). BSA and Azide Free. Stable for 12 months from date of receipt.



Western blot detection of MCM2 (phospho-Ser40) in HeLa, A549, MCF-7, 293T, C2C12 cell lysates using MCM2 (phospho-Ser40) antibody (1:1000 diluted).



Western blot analysis of extracts from HCT116, A431 cells using db14023 at 1:1000.



Immunohistochemical analysis of paraffin-embedded human tonsil using db14023 antibody.