

Recombinant

DGRmAb®

Phospho-Cdc6 (Ser106) (DGR12822) Rabbit mAb (PBS Only)

db14791-PBS

Package : 100µg

Product Name : Phospho-Cdc6 (Ser106) (DGR12822) Rabbit mAb (PBS Only)**Cat.No.:** db14791-PBS**Synonyms** : CDC18L; HsCDC6; MGORS5; HsCDC18**Application** : WB**Reactivity** : Human**Host species** : Rabbit**Background**

The protein encoded by this gene is highly similar to *Saccharomyces cerevisiae* Cdc6, a protein essential for the initiation of DNA replication. This protein functions as a regulator at the early steps of DNA replication. It localizes in cell nucleus during cell cycle G1, but translocates to the cytoplasm at the start of S phase. The subcellular translocation of this protein during cell cycle is regulated through its phosphorylation by Cdks. Transcription of this protein was reported to be regulated in response to mitogenic signals through transcriptional control mechanism involving E2F proteins. [provided by RefSeq, Jul 2008]

Immunogen

A synthetic phosphopeptide corresponding to residues surrounding Ser106 of human Cdc6

Gene ID

990

Swiss Prot

Q99741

Synonyms

CDC18L; HsCDC6; MGORS5; HsCDC18

Reactivity

Human

Application

WB

Recommended dilution

WB: 1:1000

Calculated MW

63 kDa

Observed MW

63 kDa

Host species

Rabbit

Clonality

Monoclonal

Clonality No.

DGR12822

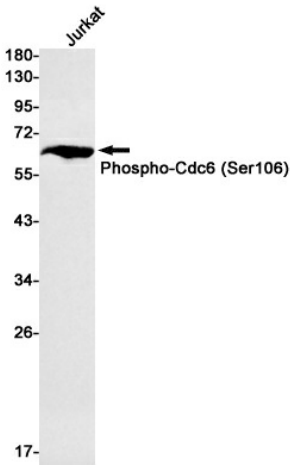
Isotype

IgG

Purity

Affinity Purification

Conjugation	Un-conjugated
Concentration	1 mg/ml
Formulation	PBS Only
Storage Stability	Store at -20°C. Recommended to aliquot into single-use vials. Supplied in 1X PBS (pH 7.4). BSA and Azide Free. Stable for 12 months from date of receipt.



Western blot detection of Phospho-Cdc6 (Ser106) in Jurkat cell lysates using [db14791](#) (1:1000 diluted).