

Recombinant

DGRmAb®

## Phospho-EGFR (Tyr1068) (DGR13881) Rabbit mAb (PBS Only)

db14353-PBS

Package : 100µg

**Product Name** : Phospho-EGFR (Tyr1068) (DGR13881) Rabbit mAb (PBS Only)**Cat.No.:** db14353-PBS**Synonyms** : ERBB; HER1; mENA; ERBB1; PIG61; NISBD2**Application** : WB, IHC-P, ICC/IF, FC**Reactivity** : Human,Mouse**Host species** : Rabbit**Background**

The protein encoded by this gene is a transmembrane glycoprotein that is a member of the protein kinase superfamily. This protein is a receptor for members of the epidermal growth factor family. EGFR is a cell surface protein that binds to epidermal growth factor. Binding of the protein to a ligand induces receptor dimerization and tyrosine autophosphorylation and leads to cell proliferation. Mutations in this gene are associated with lung cancer. [provided by RefSeq, Jun 2016]

**Immunogen**

A synthetic phosphopeptide corresponding to residues surrounding Tyr1068 of human EGFR

**Gene ID**

1956

**Swiss Prot**

P00533

**Synonyms**

ERBB; HER1; mENA; ERBB1; PIG61; NISBD2

**Reactivity**

Human,Mouse

**Application**

WB, IHC-P, ICC/IF, FC

**Recommended dilution**

WB: 1:1000-1:5000

IHC-P: 1:200-1:500

ICC/IF: 1:200-1:500

FC: 1:200-1:1000

**Calculated MW**

134 kDa

**Observed MW**

175 kDa

**Host species**

Rabbit

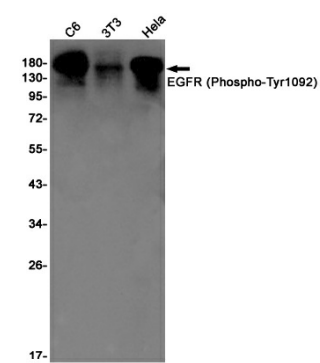
**Clonality**

Monoclonal

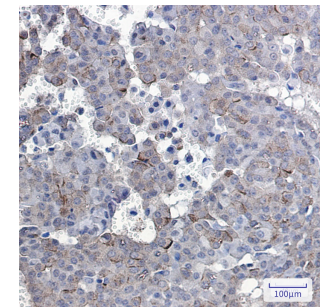
**Clonality No.**

DGR13881

Isotype	IgG
Purity	Affinity Purification
Conjugation	Un-conjugated
Concentration	1 mg/ml
Formulation	PBS Only
Storage Stability	Store at -20°C. Recommended to aliquot into single-use vials. Supplied in 1X PBS (pH 7.4). BSA and Azide Free. Stable for 12 months from date of receipt.



Western blot detection of EGFR (Phospho-Tyr1092) in C6,3T3,HeLa cell lysates using [db14353](#)(1:1000 diluted).



Immunohistochemical analysis of paraffin-embedded human breast cancer using [db14353](#)