

Recombinant

DGRmAb®

**Lamin A/C (DGR31266) Rabbit mAb (PBS Only)**

db11008-PBS

Package : 10µg 100µg

**Product Name** : Lamin A/C (DGR31266) Rabbit mAb (PBS Only)**Cat.No.:** db11008-PBS**Synonyms** : FPL; IDC; LFP; CDDC; EMD2; FPLD; HGPS; LDP1; LMN1; LMNC; MADA; PRO1; CDCD1; CMD1A;  
FPLD2; LMNL1; CMT2B1; LGMD1B**Application** : WB, IHC-P, ICC/IF**Reactivity** : Human, Mouse, Rat**Host species** : Rabbit**Background**

The nuclear lamina consists of a two-dimensional matrix of proteins located next to the inner nuclear membrane. The lamin family of proteins make up the matrix and are highly conserved in evolution. During mitosis, the lamina matrix is reversibly disassembled as the lamin proteins are phosphorylated. Lamin proteins are thought to be involved in nuclear stability, chromatin structure and gene expression. Vertebrate lamins consist of two types, A and B. Alternative splicing results in multiple transcript variants. Mutations in this gene lead to several diseases: Emery-Dreifuss muscular dystrophy, familial partial lipodystrophy, limb girdle muscular dystrophy, dilated cardiomyopathy, Charcot-Marie-Tooth disease, and Hutchinson-Gilford progeria syndrome. [provided by RefSeq, Apr 2012]

**Immunogen**

A synthetic peptide of human Lamin A/C

**Gene ID**

4000

**Swiss Prot**

P02545

**Synonyms**FPL; IDC; LFP; CDDC; EMD2; FPLD; HGPS; LDP1; LMN1; LMNC; MADA; PRO1; CDCD1;  
CMD1A; FPLD2; LMNL1; CMT2B1; LGMD1B**Reactivity**

Human, Mouse, Rat

**Application**

WB, IHC-P, ICC/IF

**Calculated MW**

74 kDa

**Observed MW**

74,63 kDa

**Host species**

Rabbit

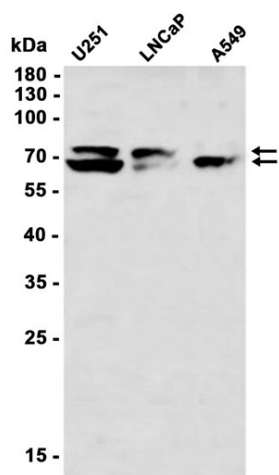
**Clonality**

Monoclonal

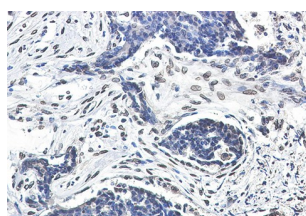
**Clonality No.**

DGR31266

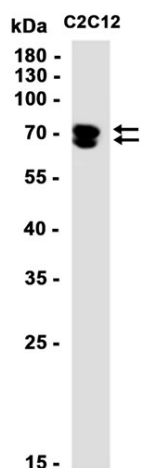
<b>Isotype</b>	IgG
<b>Purity</b>	Affinity Purification
<b>Conjugation</b>	Un-conjugated
<b>Concentration</b>	1 mg/mL
<b>Formulation</b>	PBS Only
<b>Storage Stability</b>	Store at -20°C. Recommended to aliquot into single-use vials. Supplied in 1X PBS (pH 7.4). BSA and Azide Free. Stable for 12 months from date of receipt.



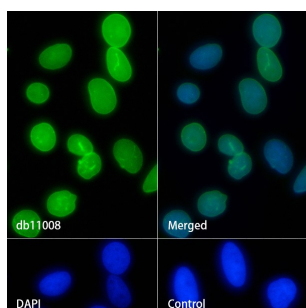
Western blot analysis of extracts from U251, LNCaP, A549 cells using [db11008](#) at 1:1000.



Immunohistochemical analysis of paraffin-embedded human breast cancer using [db11008](#) antibody.



Western blot analysis of extracts from C2C12 cells using [db11008](#) at 1:1000.



Immunofluorescence analysis of HeLa cells labelling Lamin A/C with [db11008](#).

The cells were fixed with 4% PFA (10min, RT) followed by treatment with 0.1% Triton X-100 (10min, RT), and blocked in 1% BSA/10% normal goat serum/0.3M glycine in 0.1% PBS-Tween 20 for 1h. The cells were then incubate with [db11008](#) (1:200) at room temperature for 1h, followed by a further incubation at room temperature for 45min with Goat Anti Rabbit IgG (H+L)-AF488 ([db10005](#), shown in green). Nuclear DNA was labeled in blue with DAPI.

Control: Secondary antibody only.

