

Recombinant

DGRmAb®

Claudin 3 (DGR14058) Rabbit mAb (PBS Only)

db13582-PBS

Package : 10µg 100µg

Product Name : Claudin 3 (DGR14058) Rabbit mAb (PBS Only)**Cat.No.:** db13582-PBS**Synonyms** : RVP1; HRVP1; C7orf1; CPE-R2; CPETR2**Application** : WB, IHC-P, ICC/IF, FC, IP**Reactivity** : Human**Host species** : Rabbit**Background**

Tight junctions represent one mode of cell-to-cell adhesion in epithelial or endothelial cell sheets, forming continuous seals around cells and serving as a physical barrier to prevent solutes and water from passing freely through the paracellular space. These junctions are comprised of sets of continuous networking strands in the outwardly facing cytoplasmic leaflet, with complementary grooves in the inwardly facing extracytoplasmic leaflet. The protein encoded by this intronless gene, a member of the claudin family, is an integral membrane protein and a component of tight junction strands. It is also a low-affinity receptor for *Clostridium perfringens* enterotoxin, and shares aa sequence similarity with a putative apoptosis-related protein found in rat. [provided by RefSeq, Jul 2008]

Immunogen

A synthetic peptide of human Claudin 3

Gene ID

1365

Swiss Prot

O15551

Synonyms

RVP1; HRVP1; C7orf1; CPE-R2; CPETR2

Reactivity

Human

Application

WB, IHC-P, ICC/IF, FC, IP

Calculated MW

23 kDa

Observed MW

20 kDa

Host species

Rabbit

Clonality

Monoclonal

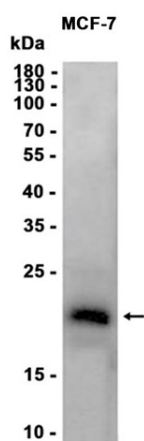
Clonality No.

DGR14058

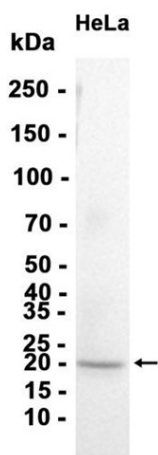
Isotype

IgG

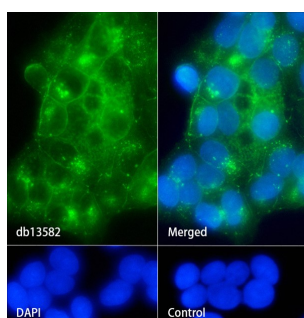
Purity	Affinity Purification
Conjugation	Un-conjugated
Concentration	1 mg/mL
Formulation	PBS Only
Storage Stability	Store at -20°C. Recommended to aliquot into single-use vials. Supplied in 1X PBS (pH 7.4). BSA and Azide Free. Stable for 12 months from date of receipt.



Western blot analysis of extracts from MCF-7 cells using [db13582](#) at 1:1000.



Western blot analysis of extracts from HeLa cells using [db13582](#) at 1:1000.



Immunofluorescence analysis of MCF-7 cells labelling Claudin 3 with [db13582](#).

The cells were fixed with cold 100% methanol (10min, 4°C) and blocked in 1% BSA/10% normal goat serum/0.3M glycine in 0.1% PBS-Tween 20 for 1h. The cells were then incubate with [db13582](#) (1:100) at room temprature for 1h, followed by a further incubation at room temperature for 45min with Goat Anti Rabbit IgG (H+L)-AF488 [db10005](#), shown in green). Nuclear DNA was labeled in blue with DAPI.

Control: Secondary antibody only.