

Recombinant

DGRmAb®

Cytochrome C (DGR13732) Rabbit mAb (PBS Only)

db12144-PBS

Package : 100µg

Product Name : Cytochrome C (DGR13732) Rabbit mAb (PBS Only)**Cat.No.:** db12144-PBS**Synonyms** : CYC; HCS; THC4**Application** : WB, IHC-P, ICC/IF, IP**Reactivity** : Human,Mouse,Rat**Host species** : Rabbit**Background**

This gene encodes a small heme protein that functions as a central component of the electron transport chain in mitochondria. The encoded protein associates with the inner membrane of the mitochondrion where it accepts electrons from cytochrome b and transfers them to the cytochrome oxidase complex. This protein is also involved in initiation of apoptosis. Mutations in this gene are associated with autosomal dominant nonsyndromic thrombocytopenia. Numerous processed pseudogenes of this gene are found throughout the human genome.[provided by RefSeq, Jul 2010]

Immunogen

A synthetic peptide of human Cytochrome C

Gene ID

54205

Swiss Prot

P99999

Synonyms

CYC; HCS; THC4

Reactivity

Human,Mouse,Rat

Application

WB, IHC-P, ICC/IF, IP

Calculated MW

12 kDa

Observed MW

14 kDa

Host species

Rabbit

Clonality

Monoclonal

Clonality No.

DGR13732

Isotype

IgG

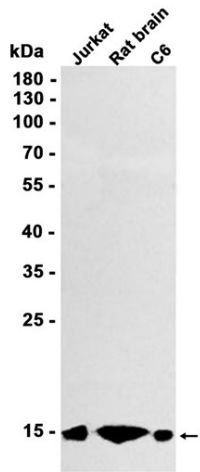
Purity

Affinity Purification

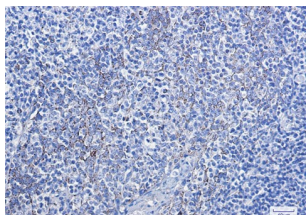
Conjugation

Un-conjugated

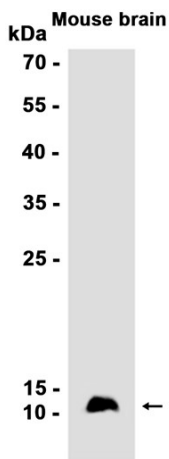
Concentration	1 mg/mL
Formulation	PBS Only
Storage Stability	Store at -20°C. Recommended to aliquot into single-use vials. Supplied in 1X PBS (pH 7.4). BSA and Azide Free. Stable for 12 months from date of receipt.



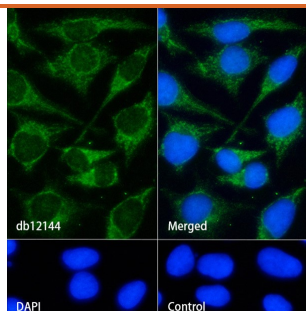
Western blot analysis of extracts from Jurkat, C6 cells and Rat brain tissue using db12144 at 1:1000.



Immunohistochemical analysis of paraffin-embedded human tonsil using db12144 antibody.



Western blot analysis of extracts from Mouse brain tissue using db12144 at 1:1000.



Immunofluorescence analysis of HeLa cells labelling Cytochrome C with [db12144](#).

The cells were fixed with cold 100% methanol (10min, 4°C) and blocked in 1% BSA/10% normal goat serum/0.3M glycine in 0.1% PBS-Tween 20 for 1h. The cells were then incubate with [db12144](#) (1:100) at room temprature for 1h, followed by a further incubation at room temperature for 45min with Goat Anti Rabbit IgG (H+L)-AF488 [db10005](#), shown in green).

Nuclear DNA was labeled in blue with DAPI.

Control: Secondary antibody only.