

Recombinant

DGRmAb®

CCN1 (DGR16698) Rabbit mAb (PBS Only)

db12343-PBS

Package : 10µg 100µg

Product Name : CCN1 (DGR16698) Rabbit mAb (PBS Only)**Cat.No.:** db12343-PBS**Synonyms** : GIG1; CYR61; IGFBP10**Application** : WB, ICC/IF, FC, IP**Reactivity** : Human**Host species** : Rabbit**Background**

The secreted protein encoded by this gene is growth factor-inducible and promotes the adhesion of endothelial cells. The encoded protein interacts with several integrins and with heparan sulfate proteoglycan. This protein also plays a role in cell proliferation, differentiation, angiogenesis, apoptosis, and extracellular matrix formation. [provided by RefSeq, Sep 2011]

Immunogen

Recombinant protein of human CCN1

Gene ID

3491

Swiss Prot

O00622

Synonyms

GIG1; CYR61; IGFBP10

Reactivity

Human

Application

WB, ICC/IF, FC, IP

Calculated MW

42 kDa

Observed MW

42 kDa

Host species

Rabbit

Clonality

Monoclonal

Clonality No.

DGR16698

Isotype

IgG

Purity

Affinity Purification

Conjugation

Un-conjugated

Concentration

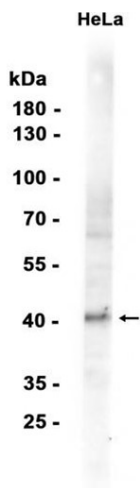
1 mg/mL

Formulation

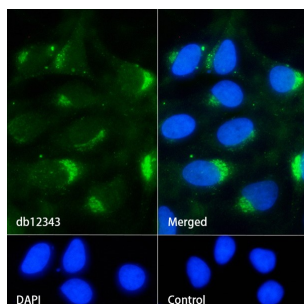
PBS Only

Storage Stability

Store at -20°C. Recommended to aliquot into single-use vials. Supplied in 1X PBS (pH 7.4). BSA and Azide Free. Stable for 12 months from date of receipt.



Western blot analysis of extracts from HeLa cells using db12343 at 1:1000.



Immunofluorescence analysis of HeLa cells labelling CCN1 with db12343.

The cells were fixed with 4% PFA (10min, RT) followed by treatment with 0.1% Triton X-100 (10min, RT), and blocked in 1% BSA/10% normal goat serum/0.3M glycine in 0.1% PBS-Tween 20 for 1h. The cells were then incubate with db12343 (1:200) at room temperature for 1h, followed by a further incubation at room temperature for 45min with Goat Anti Rabbit IgG (H+L)-AF488 db10005, shown in green). Nuclear DNA was labeled in blue with DAPI.

Control: Secondary antibody only.