

Recombinant

DGRmAb®

Cyclin A2 (DGR11202) Rabbit mAb (PBS Only)

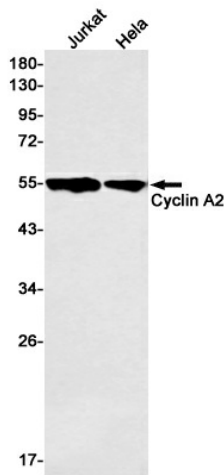
db11895-PBS

Package : 100µg

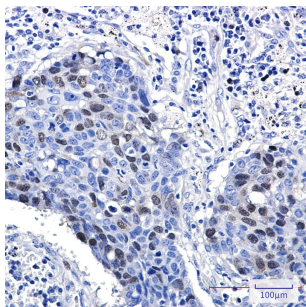
Product Name : Cyclin A2 (DGR11202) Rabbit mAb (PBS Only)**Cat.No.:** db11895-PBS**Synonyms** : CCN1; CCNA**Application** : WB, IHC-P, ICC/IF, IP**Reactivity** : Human**Host species** : Rabbit

Background	The protein encoded by this gene belongs to the highly conserved cyclin family, whose members function as regulators of the cell cycle. This protein binds and activates cyclin-dependent kinase 2 and thus promotes transition through G1/S and G2/M. [provided by RefSeq, Aug 2016]
Immunogen	Recombinant protein of human Cyclin A2
Gene ID	890
Swiss Prot	P20248
Synonyms	CCN1; CCNA
Reactivity	Human
Application	WB, IHC-P, ICC/IF, IP
Recommended dilution	WB: 1:1000 IHC-P: 1:200-1:2000 ICC/IF: 1:100-1:200 IP: 1:20-1:50
Calculated MW	49 kDa
Observed MW	49 kDa
Host species	Rabbit
Clonality	Monoclonal
Clonality No.	DGR11202
Isotype	IgG
Purity	Affinity Purification

Conjugation	Un-conjugated
Concentration	1 mg/ml
Formulation	PBS Only
Storage Stability	Store at -20°C. Recommended to aliquot into single-use vials. Supplied in 1X PBS (pH 7.4). BSA and Azide Free. Stable for 12 months from date of receipt.



Western blot detection of Cyclin A2 in Jurkat, HeLa cell lysates using [db11895](#) (1:500 diluted).



Immunohistochemical analysis of paraffin-embedded human lung cancer using [db11895](#)