

Recombinant

DGRmAb®

## eIF4E (DGR18881) Rabbit mAb (PBS Only)

db11590-PBS

Package : 100µg

**Product Name :** eIF4E (DGR18881) Rabbit mAb (PBS Only)**Cat.No.:** db11590-PBS**Synonyms :** CBP; EIF4F; AUTS19; EIF4E1; eIF-4E; EIF4EL1**Application :** WB, IHC, ICC/IF, FC, IP**Reactivity :** Human, Mouse, Rat**Host species :** Rabbit**Background**

The protein encoded by this gene is a component of the eukaryotic translation initiation factor 4F complex, which recognizes the 7-methylguanosine cap structure at the 5' end of messenger RNAs. The encoded protein aids in translation initiation by recruiting ribosomes to the 5'-cap structure. Association of this protein with the 4F complex is the rate-limiting step in translation initiation. This gene acts as a proto-oncogene, and its expression and activation is associated with transformation and tumorigenesis. Several pseudogenes of this gene are found on other chromosomes. Alternative splicing results in multiple transcript variants. [provided by RefSeq, Sep 2015]

**Immunogen**

A synthetic peptide of human eIF4E

**Gene ID**

1977

**Swiss Prot**

P06730

**Synonyms**

CBP; EIF4F; AUTS19; EIF4E1; eIF-4E; EIF4EL1

**Reactivity**

Human, Mouse, Rat

**Application**

WB, IHC, ICC/IF, FC, IP

**Recommended dilution**WB: 1:1000  
IHC: 1:200-1:500  
ICC/IF: 1:50  
FC: 1:50  
IP: 1:20**Calculated MW**

25 kDa

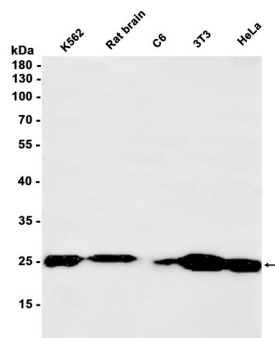
**Observed MW**

25 kDa

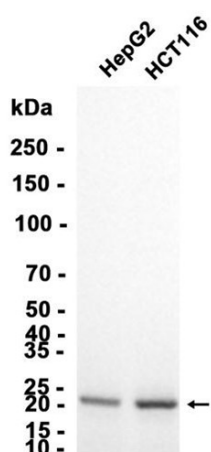
**Host species**

Rabbit

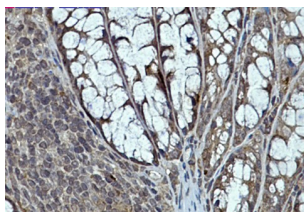
<b>Clonality</b>	Monoclonal
<b>Clonality No.</b>	DGR18881
<b>Isotype</b>	IgG
<b>Purity</b>	Affinity Purification
<b>Conjugation</b>	Un-conjugated
<b>Concentration</b>	1 mg/ml
<b>Formulation</b>	PBS Only
<b>Storage Stability</b>	Store at -20°C. Recommended to aliquot into single-use vials. Supplied in 1X PBS (pH 7.4). BSA and Azide Free. Stable for 12 months from date of receipt.



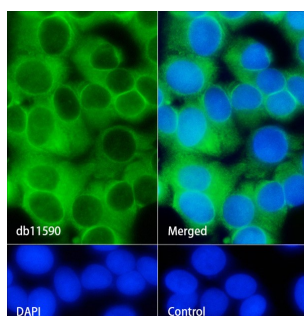
Western blot analysis of extracts from K562, C6, 3T3, HeLa cells and Rat brain tissue using db11590 at 1:1000.



Western blot analysis of extracts from HepG2, HCT116 cells using db11590 at 1:5000.



Immunohistochemical analysis of paraffin-embedded mouse colon using db11590 antibody.



Immunofluorescence analysis of MCF-7 cells labelling eIF4E with db11590.

The cells were fixed with cold 100% methanol (10min, 4°C) and blocked in 1% BSA/10% normal goat serum/0.3M glycine in 0.1% PBS-Tween 20 for 1h. The cells were then incubate with db11590 (1:50) at room temprature for 1h, followed by a further incubation at room temperature for 45min with Goat Anti Rabbit IgG (H+L)-AF488 (db10005, shown in green). Nuclear DNA was labeled in blue with DAPI.

Control: Secondary antibody only.