

Recombinant

DGRmAb®

Myelin Basic Protein (DGR14508) Rabbit mAb (PBS Only)

db14893-PBS

Package : 10µg 100µg

Product Name : Myelin Basic Protein (DGR14508) Rabbit mAb (PBS Only)**Cat.No.:** db14893-PBS**Synonyms** : MBP**Application** : WB, IHC-P**Reactivity** : Human**Host species** : Rabbit**Background**

The protein encoded by the classic MBP gene is a major constituent of the myelin sheath of oligodendrocytes and Schwann cells in the nervous system. However, MBP-related transcripts are also present in the bone marrow and the immune system. These mRNAs arise from the long MBP gene (otherwise called "Golli-MBP") that contains 3 additional exons located upstream of the classic MBP exons. Alternative splicing from the Golli and the MBP transcription start sites gives rise to 2 sets of MBP-related transcripts and gene products. The Golli mRNAs contain 3 exons unique to Golli-MBP, spliced in-frame to 1 or more MBP exons. They encode hybrid proteins that have N-terminal Golli aa sequence linked to MBP aa sequence. The second family of transcripts contain only MBP exons and produce the well characterized myelin basic proteins. This complex gene structure is conserved among species suggesting that the MBP transcription unit is an integral part of the Golli transcription unit and that this arrangement is important for the function and/or regulation of these genes. [provided by RefSeq, Jul 2008]

Immunogen

Recombinant protein of human Myelin Basic Protein

Gene ID

4155

Swiss Prot

P02686

Synonyms

MBP

Reactivity

Human

Application

WB, IHC-P

Calculated MW

33 kDa

Observed MW

18 kDa

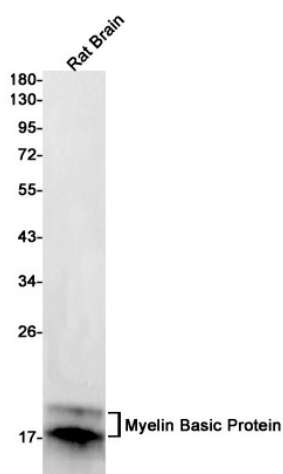
Host species

Rabbit

Clonality

Monoclonal

Clonality No.	DGR14508
Isotype	IgG
Purity	Affinity Purification
Conjugation	Un-conjugated
Concentration	1 mg/mL
Formulation	PBS Only
Storage Stability	Store at -20°C. Recommended to aliquot into single-use vials. Supplied in 1X PBS (pH 7.4). BSA and Azide Free. Stable for 12 months from date of receipt.



Western blot detection of Myelin Basic Protein in Rat Brain lysates using Myelin Basic Protein antibody(1:1000 diluted).