

Recombinant

DGRmAb®

ALDH1A1 (DGR11956) Rabbit mAb (PBS Only)

db12121-PBS

Package : 100µg

Product Name : ALDH1A1 (DGR11956) Rabbit mAb (PBS Only)**Cat.No.:** db12121-PBS**Synonyms** : ALDC; ALDH1; HEL-9; HEL12; PUMB1; ALDH11; RALDH1; ALDH-E1; HEL-S-53e**Application** : WB, IHC-P, ICC/IF, FC, IP**Reactivity** : Human, Mouse**Host species** : Rabbit**Background**

The protein encoded by this gene belongs to the aldehyde dehydrogenase family. Aldehyde dehydrogenase is the next enzyme after alcohol dehydrogenase in the major pathway of alcohol metabolism. There are two major aldehyde dehydrogenase isozymes in the liver, cytosolic and mitochondrial, which are encoded by distinct genes, and can be distinguished by their electrophoretic mobility, kinetic properties, and subcellular localization. This gene encodes the cytosolic isozyme. Studies in mice show that through its role in retinol metabolism, this gene may also be involved in the regulation of the metabolic responses to high-fat diet. [provided by RefSeq, Mar 2011]

Immunogen

A synthetic peptide of human ALDH1A1

Gene ID

216

Swiss Prot

P00352

Synonyms

ALDC; ALDH1; HEL-9; HEL12; PUMB1; ALDH11; RALDH1; ALDH-E1; HEL-S-53e

Reactivity

Human, Mouse

Application

WB, IHC-P, ICC/IF, FC, IP

Calculated MW

55 kDa

Observed MW

55 kDa

Host species

Rabbit

Clonality

Monoclonal

Clonality No.

DGR11956

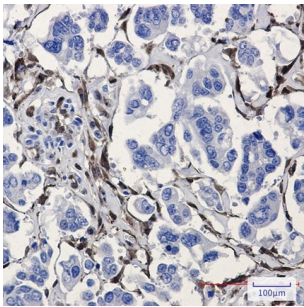
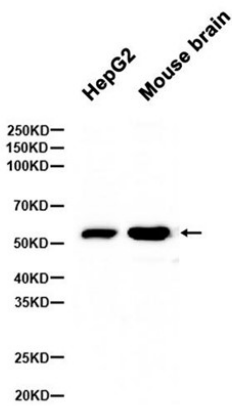
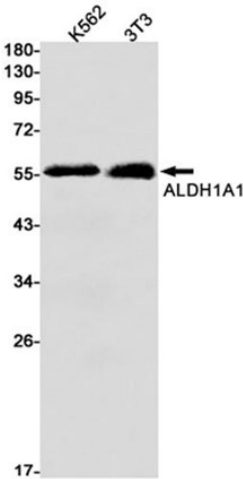
Isotype

IgG

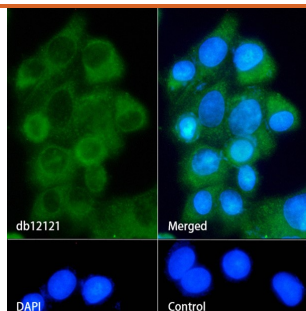
Purity

Affinity Purification

Conjugation	Un-conjugated
Concentration	1 mg/mL
Formulation	PBS Only
Storage Stability	Store at -20°C. Recommended to aliquot into single-use vials. Supplied in 1X PBS (pH 7.4). BSA and Azide Free. Stable for 12 months from date of receipt.



Immunohistochemical analysis of paraffin-embedded human Cholangiocarcinoma using db12121 antibody.



Immunofluorescence analysis of HepG2 cells labelling ALDH1A1 with [db12121](#).

The cells were fixed with cold 100% methanol (10min, 4°C) and blocked in 1% BSA/10% normal goat serum/0.3M glycine in 0.1% PBS-Tween 20 for 1h. The cells were then incubate with [db12121](#) (1:100) at room temprature for 1h, followed by a further incubation at room temperature for 45min with Goat Anti Rabbit IgG (H+L)-AF488 [db10005](#), shown in green).

Nuclear DNA was labeled in blue with DAPI.

Control: Secondary antibody only.