

Recombinant

DGRmAb®

Synaptophysin (DGR15438) Rabbit mAb (PBS Only)

db11816-PBS

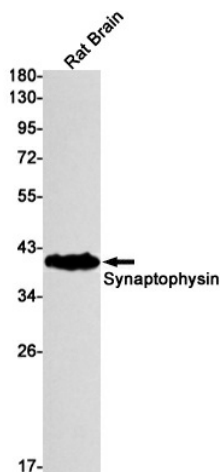
Package : 10µg 100µg

Product Name : Synaptophysin (DGR15438) Rabbit mAb (PBS Only)**Cat.No.:** db11816-PBS**Synonyms** : MRX96; MRXSYP**Application** : WB, IHC, ICC/IF**Reactivity** : Human, Mouse, Rat**Host species** : Rabbit

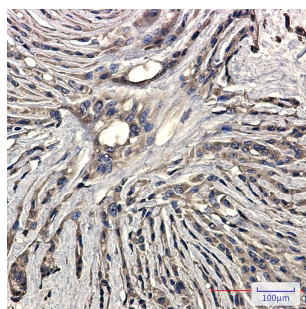
Background	This gene encodes an integral membrane protein of small synaptic vesicles in brain and endocrine cells. The protein also binds cholesterol and is thought to direct targeting of vesicle-associated membrane protein 2 (synaptobrevin) to intracellular compartments. Mutations in this gene are associated with an X-linked form of cognitive disability. [provided by RefSeq, Jul 2017]
Immunogen	A synthetic peptide of human Synaptophysin
Gene ID	6855
Swiss Prot	P08247
Synonyms	MRX96; MRXSYP
Reactivity	Human, Mouse, Rat
Application	WB, IHC, ICC/IF
Calculated MW	34 kDa
Observed MW	38 kDa
Host species	Rabbit
Clonality	Monoclonal
Clonality No.	DGR15438
Isotype	IgG
Purity	Affinity Purification
Conjugation	Un-conjugated
Concentration	1 mg/mL
Formulation	PBS Only

Storage Stability

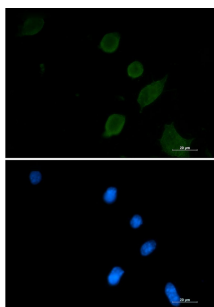
Store at -20°C. Recommended to aliquot into single-use vials. Supplied in 1X PBS (pH 7.4). BSA and Azide Free. Stable for 12 months from date of receipt.



Western blot detection of Synaptophysin in Rat Brain lysates using Synaptophysin antibody(1:1000 diluted).



Immunohistochemical analysis of paraffin-embedded human Brain using db11816 antibody.



Immunofluorescent analysis of 3T3 cells using db11816 antibody (green), and DAPI (blue).