

Recombinant

DGRmAb®

CD38 (DGR11645) Rabbit mAb (PBS Only)

db15939-PBS

Package : 100µg

Product Name : CD38 (DGR11645) Rabbit mAb (PBS Only)**Cat.No.:** db15939-PBS**Synonyms :** ADPRC1; ADPRC 1**Application :** WB, IHC-P, FC**Reactivity :** Human**Host species :** Rabbit**Background**

The protein encoded by this gene is a non-lineage-restricted, type II transmembrane glycoprotein that synthesizes and hydrolyzes cyclic adenosine 5'-diphosphate-ribose, an intracellular calcium ion mobilizing messenger. The release of soluble protein and the ability of membrane-bound protein to become internalized indicate both extracellular and intracellular functions for the protein. This protein has an N-terminal cytoplasmic tail, a single membrane-spanning domain, and a C-terminal extracellular region with four N-glycosylation sites. Crystal structure analysis demonstrates that the functional molecule is a dimer, with the central portion containing the catalytic site. It is used as a prognostic marker for patients with chronic lymphocytic leukemia. Alternative splicing results in multiple transcript variants. [provided by RefSeq, Sep 2015]

Immunogen

A synthetic peptide of human CD38

Gene ID

952

Swiss Prot

P28907

Synonyms

ADPRC1; ADPRC 1

Reactivity

Human

Application

WB, IHC-P, FC

Recommended dilutionWB: 1:1000
IHC-P: 1:200-1:1000
FC: 1:10-1:100**Calculated MW**

34 kDa

Observed MW

45 kDa

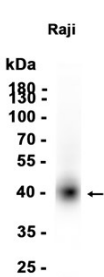
Host species

Rabbit

Clonality

Monoclonal

Clonality No.	DGR11645
Isotype	IgG
Purity	Affinity Purification
Conjugation	Un-conjugated
Concentration	1 mg/ml
Formulation	PBS Only
Storage Stability	Store at -20°C. Recommended to aliquot into single-use vials. Supplied in 1X PBS (pH 7.4). BSA and Azide Free. Stable for 12 months from date of receipt.



Western blot analysis of extracts from Raji cells using [db15939](#)