

Recombinant

DGRmAb®

Cyclin D1 (DGR11113) Rabbit mAb (PBS Only)

db11659-PBS

Package : 10µg 100µg

Product Name : Cyclin D1 (DGR11113) Rabbit mAb (PBS Only)**Cat.No.:** db11659-PBS**Synonyms** : BCL1; PRAD1; U21B31; D11S287E**Application** : WB, IHC-P, ICC/IF, IP**Reactivity** : Human,Mouse,Rat**Host species** : Rabbit**Background**

The protein encoded by this gene belongs to the highly conserved cyclin family, whose members are characterized by a dramatic periodicity in protein abundance throughout the cell cycle. Cyclins function as regulators of CDK kinases. Different cyclins exhibit distinct expression and degradation patterns which contribute to the temporal coordination of each mitotic event. This cyclin forms a complex with and functions as a regulatory subunit of CDK4 or CDK6, whose activity is required for cell cycle G1/S transition. This protein has been shown to interact with tumor suppressor protein Rb and the expression of this gene is regulated positively by Rb. Mutations, amplification and overexpression of this gene, which alters cell cycle progression, are observed frequently in a variety of tumors and may contribute to tumorigenesis. [provided by RefSeq, Jul 2008]

Immunogen

A synthetic peptide of human Cyclin D1

Gene ID

595

Swiss Prot

P24385

Synonyms

BCL1; PRAD1; U21B31; D11S287E

Reactivity

Human,Mouse,Rat

Application

WB, IHC-P, ICC/IF, IP

Calculated MW

34 kDa

Observed MW

36 kDa

Host species

Rabbit

Clonality

Monoclonal

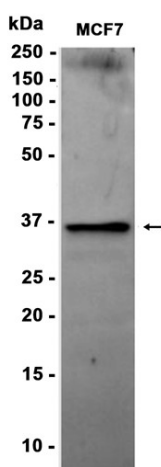
Clonality No.

DGR11113

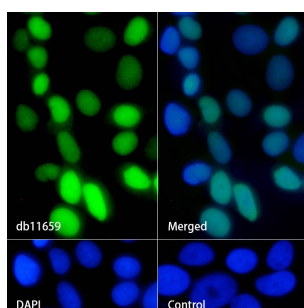
Isotype

IgG

Purity	Affinity Purification
Conjugation	Un-conjugated
Concentration	1 mg/mL
Formulation	PBS Only
Storage Stability	Store at -20°C. Recommended to aliquot into single-use vials. Supplied in 1X PBS (pH 7.4). BSA and Azide Free. Stable for 12 months from date of receipt.



Western blot analysis of extracts from MCF-7 cells using [db11659](#) at 1:1000.



Immunofluorescence analysis of MCF-7 cells labelling Cyclin D1 with [db11659](#).

The cells were fixed with 4% PFA (10min, RT) followed by treatment with 0.1% Triton X-100 (10min, RT), and blocked in 1% BSA/10% normal goat serum/0.3M glycine in 0.1% PBS-Tween 20 for 1h. The cells were then incubate with [db11659](#) (1:50) at room temperature for 1h, followed by a further incubation at room temperature for 45min with Goat Anti Rabbit IgG (H+L)-AF488 [db10005](#), shown in green). Nuclear DNA was labeled in blue with DAPI.

Control: Secondary antibody only.