

Recombinant

DGRmAb®

CDK4 (DGR13120) Rabbit mAb (PBS Only)

db12526-PBS

Package : 10µg 100µg

Product Name : CDK4 (DGR13120) Rabbit mAb (PBS Only)**Cat.No.:** db12526-PBS**Synonyms** : CMM3; PSK-J3**Application** : WB, ICC/IF**Reactivity** : Human**Host species** : Rabbit**Background**

The protein encoded by this gene is a member of the Ser/Thr protein kinase family. This protein is highly similar to the gene products of *S. cerevisiae* cdc28 and *S. pombe* cdc2. It is a catalytic subunit of the protein kinase complex that is important for cell cycle G1 phase progression. The activity of this kinase is restricted to the G1-S phase, which is controlled by the regulatory subunits D-type cyclins and CDK inhibitor p16(INK4a). This kinase was shown to be responsible for the phosphorylation of retinoblastoma gene product (Rb). Mutations in this gene as well as in its related proteins including D-type cyclins, p16(INK4a) and Rb were all found to be associated with tumorigenesis of a variety of cancers. Multiple polyadenylation sites of this gene have been reported. [provided by RefSeq, Jul 2008]

Immunogen

A synthetic peptide of human Cdk4

Gene ID

1019

Swiss Prot

P11802

Synonyms

CMM3; PSK-J3

Reactivity

Human

Application

WB, ICC/IF

Calculated MW

34 kDa

Observed MW

34 kDa

Host species

Rabbit

Clonality

Monoclonal

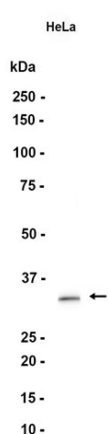
Clonality No.

DGR13120

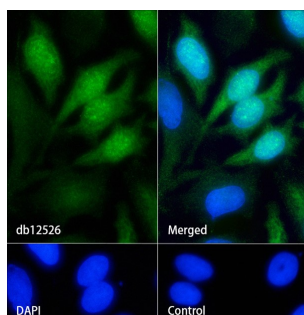
Isotype

IgG

Purity	Affinity Purification
Conjugation	Un-conjugated
Concentration	1 mg/mL
Formulation	PBS Only
Storage Stability	Store at -20°C. Recommended to aliquot into single-use vials. Supplied in 1X PBS (pH 7.4). BSA and Azide Free. Stable for 12 months from date of receipt.



Western blot analysis of extracts from HeLa cells using [db12526](#) at 1:1000.



Immunofluorescence analysis of HeLa cells labelling CDK4 with [db12526](#).

The cells were fixed with cold 100% methanol (10min, 4°C) and blocked in 1% BSA/10% normal goat serum/0.3M glycine in 0.1% PBS-Tween 20 for 1h. The cells were then incubate with [db12526](#) (1:200) at room temperature for 1h, followed by a further incubation at room temperature for 45min with Goat Anti Rabbit IgG (H+L)-AF488 [db10005](#), shown in green). Nuclear DNA was labeled in blue with DAPI.

Control: Secondary antibody only.