

Recombinant

DGRmAb®

CDK5 (DGR13878) Rabbit mAb (PBS Only)

db12466-PBS

Package : 10µg 100µg

Product Name : CDK5 (DGR13878) Rabbit mAb (PBS Only)**Cat.No.:** db12466-PBS**Synonyms** : LIS7; PSSALRE**Application** : WB, ICC/IF, FC, IP**Reactivity** : Human,Mouse,Rat**Host species** : Rabbit**Background**

This gene encodes a proline-directed serine/threonine kinase that is a member of the cyclin-dependent kinase family of proteins. Unlike other members of the family, the protein encoded by this gene does not directly control cell cycle regulation. Instead the protein, which is predominantly expressed at high levels in mammalian postmitotic central nervous system neurons, functions in diverse processes such as synaptic plasticity and neuronal migration through phosphorylation of proteins required for cytoskeletal organization, endocytosis and exocytosis, and apoptosis. In humans, an allelic variant of the gene that results in undetectable levels of the protein has been associated with lethal autosomal recessive lissencephaly-7. Alternative splicing results in multiple transcript variants. [provided by RefSeq, May 2015]

Immunogen

A synthetic peptide of human CDK5

Gene ID

1020

Swiss Prot

Q00535

Synonyms

LIS7; PSSALRE

Reactivity

Human,Mouse,Rat

Application

WB, ICC/IF, FC, IP

Calculated MW

33 kDa

Observed MW

33 kDa

Host species

Rabbit

Clonality

Monoclonal

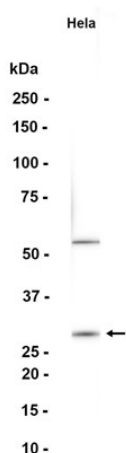
Clonality No.

DGR13878

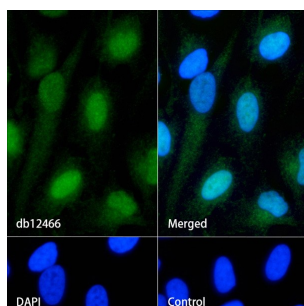
Isotype

IgG

Purity	Affinity Purification
Conjugation	Un-conjugated
Concentration	1 mg/mL
Formulation	PBS Only
Storage Stability	Store at -20°C. Recommended to aliquot into single-use vials. Supplied in 1X PBS (pH 7.4). BSA and Azide Free. Stable for 12 months from date of receipt.



Western blot analysis of extracts from HeLa cells using [db12466](#) at 1:1000.



Immunofluorescence analysis of HeLa cells labelling CDK5 with [db12466](#).

The cells were fixed with 4% PFA (10min, RT) followed by treatment with 0.1% Triton X-100 (10min, RT), and blocked in 1% BSA/10% normal goat serum/0.3M glycine in 0.1% PBS-Tween 20 for 1h. The cells were then incubate with [db12466](#) (1:50) at room temperature for 1h, followed by a further incubation at room temperature for 45min with Goat Anti Rabbit IgG (H+L)-AF488 [db10005](#), shown in green). Nuclear DNA was labeled in blue with DAPI.

Control: Secondary antibody only.