

Recombinant

DGRmAb®

## PCQAP/MED15 (DGR14018) Rabbit mAb (PBS Only)

db15457-PBS

Package : 10µg 100µg

**Product Name** : PCQAP/MED15 (DGR14018) Rabbit mAb (PBS Only)**Cat.No.:** db15457-PBS**Synonyms** : TIG1; CAG7A; CTG7A; PCQAP; TIG-1; TNRC7; ARC105**Application** : WB, IHC-P, ICC/IF, FC**Reactivity** : Human,Mouse,Rat**Host species** : Rabbit**Background**

The protein encoded by this gene is a subunit of the multiprotein complexes PC2 and ARC/DRIP and may function as a transcriptional coactivator in RNA polymerase II transcription. This gene contains stretches of trinucleotide repeats and is located in the chromosome 22 region which is deleted in DiGeorge syndrome. Alternative splicing results in multiple transcript variants. [provided by RefSeq, Jun 2014]

**Immunogen**

A synthetic peptide of human PCQAP/MED15

**Gene ID**

51586

**Swiss Prot**

Q96RN5

**Synonyms**

TIG1; CAG7A; CTG7A; PCQAP; TIG-1; TNRC7; ARC105

**Reactivity**

Human,Mouse,Rat

**Application**

WB, IHC-P, ICC/IF, FC

**Calculated MW**

87 kDa

**Observed MW**

97 kDa

**Host species**

Rabbit

**Clonality**

Monoclonal

**Clonality No.**

DGR14018

**Isotype**

IgG

**Purity**

Affinity Purification

**Conjugation**

Un-conjugated

**Concentration**

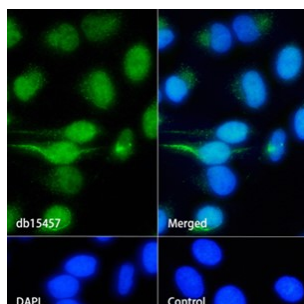
1 mg/mL

**Formulation**

PBS Only

**Storage Stability**

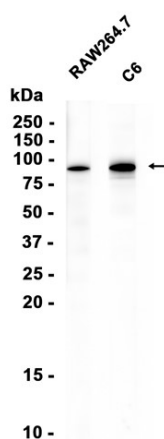
Store at -20°C. Recommended to aliquot into single-use vials. Supplied in 1X PBS (pH 7.4). BSA and Azide Free. Stable for 12 months from date of receipt.



Immunofluorescence analysis of HeLa cells labelling PCQAP/MED15 with [db15457](#).

The cells were fixed with 4% PFA (10min, RT) followed by treatment with 0.1% Triton X-100 (10min, RT), and blocked in 1% BSA/10% normal goat serum/0.3M glycine in 0.1% PBS-Tween 20 for 1h. The cells were then incubate with [db15457](#) (1:50) at room temprature for 1h, followed by a further incubation at room temperature for 45min with Goat Anti Rabbit IgG (H+L)-AF488 [db10005](#), shown in green). Nuclear DNA was labeled in blue with DAPI.

Control: Secondary antibody only.



Western blot analysis of extracts from RAW264.7,C6 cells using [db15457](#) at 1:1000.