

Recombinant

DGRmAb®

Glycerol kinase (DGR36118) Rabbit mAb (PBS Only)

db16353-PBS

Package : 100µg

Product Name : Glycerol kinase (DGR36118) Rabbit mAb (PBS Only)**Cat.No.:** db16353-PBS**Synonyms :** GK1; GKD**Application :** WB, FC**Reactivity :** Human, Mouse, Rat**Host species :** Rabbit**Background**

The protein encoded by this gene belongs to the FGGY kinase family. This protein is a key enzyme in the regulation of glycerol uptake and metabolism. It catalyzes the phosphorylation of glycerol by ATP, yielding ADP and glycerol-3-phosphate. Mutations in this gene are associated with glycerol kinase deficiency (GKD). Alternatively spliced transcript variants encoding different isoforms have been found for this gene. [provided by RefSeq, Mar 2011]

Immunogen

A synthetic peptide of human Glycerol kinase

Gene ID

2710

Swiss Prot

P32189

Synonyms

GK1; GKD

Reactivity

Human, Mouse, Rat

Application

WB, FC

Recommended dilution

WB: 1:1000-1:5000

FC: 1:200-1:500

Calculated MW

61 kDa

Observed MW

61 kDa

Host species

Rabbit

Clonality

Monoclonal

Clonality No.

DGR36118

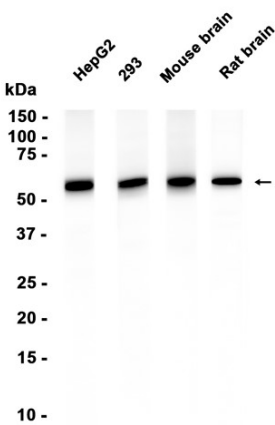
Isotype

IgG

Purity

Affinity Purification

Conjugation	Un-conjugated
Concentration	1 mg/ml
Formulation	PBS Only
Storage Stability	Store at -20°C. Recommended to aliquot into single-use vials. Supplied in 1X PBS (pH 7.4). BSA and Azide Free. Stable for 12 months from date of receipt.



Western blot analysis of extracts from HepG2, 293 cells and Mouse brain, Rat brain tissues using [db16353](#) at 1:1000.