

Recombinant

DGRmAb®

Caspase-6 (DGR31938) Rabbit mAb (PBS Only)

db12533-PBS

Package : 10µg 100µg

Product Name : Caspase-6 (DGR31938) Rabbit mAb (PBS Only)**Cat.No.:** db12533-PBS**Synonyms** : MCH2**Application** : WB, IHC, ICC/IF, FC**Reactivity** : Human, Mouse**Host species** : Rabbit**Background**

This gene encodes a member of the cysteine-aspartic acid protease (caspase) family of enzymes. Sequential activation of caspases plays a central role in the execution-phase of cell apoptosis. Caspases exist as inactive proenzymes which undergo proteolytic processing at conserved aspartic acid residues to produce two subunits, large and small, that dimerize to form the active enzyme. This protein is processed by caspases 7, 8 and 10, and is thought to function as a downstream enzyme in the caspase activation cascade. Alternative splicing of this gene results in multiple transcript variants that encode different isoforms. [provided by RefSeq, Oct 2015]

Immunogen

A synthetic peptide of human Caspase-6

Gene ID

839

Swiss Prot

P55212

Synonyms

MCH2

Reactivity

Human, Mouse

Application

WB, IHC, ICC/IF, FC

Calculated MW

33 kDa

Observed MW

11kDa(cleavage),33 kDa

Host species

Rabbit

Clonality

Monoclonal

Clonality No.

DGR31938

Isotype

IgG

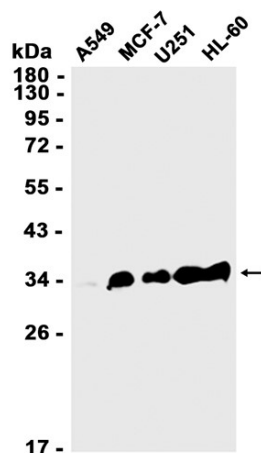
Purity

Affinity Purification

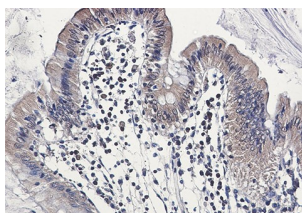
Conjugation

Un-conjugated

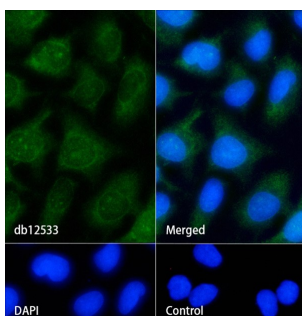
Concentration	1 mg/mL
Formulation	PBS Only
Storage Stability	Store at -20°C. Recommended to aliquot into single-use vials. Supplied in 1X PBS (pH 7.4). BSA and Azide Free. Stable for 12 months from date of receipt.



Western blot analysis of extracts from A549, MCF-7, U251, HL-60 cells using [db12533](#) at 1:1000.



Immunohistochemical analysis of paraffin-embedded human colon cancer using [db12533](#) antibody.



Immunofluorescence analysis of HeLa cells labelling Caspase-6 with [db12533](#).

The cells were fixed with cold 100% methanol (10min, 4°C) and blocked in 1% BSA/10% normal goat serum/0.3M glycine in 0.1% PBS-Tween 20 for 1h. The cells were then incubate with [db12533](#) (1:20) at room temperature for 1h, followed by a further incubation at room temperature for 45min with Goat Anti Rabbit IgG (H+L)-AF488 [db10005](#), shown in green). Nuclear DNA was labeled in blue with DAPI.

Control: Secondary antibody only.