

Recombinant

DGRmAb®

alpha Tubulin (DGR14189) Rabbit mAb (PBS Only)

db13212-PBS

Package : 100µg

Product Name : alpha Tubulin (DGR14189) Rabbit mAb (PBS Only)**Cat.No.:** db13212-PBS**Synonyms** : ALS22; TUBA1; H2-ALPHA**Application** : WB, IHC, ICC/IF, FC**Reactivity** : Human, Mouse, Rat**Host species** : Rabbit**Background**

Microtubules of the eukaryotic cytoskeleton perform essential and diverse functions and are composed of a heterodimer of alpha and beta tubulin. The genes encoding these microtubule constituents are part of the tubulin superfamily, which is composed of six distinct families. Genes from the alpha, beta and gamma tubulin families are found in all eukaryotes. The alpha and beta tubulins represent the major components of microtubules, while gamma tubulin plays a critical role in the nucleation of microtubule assembly. There are multiple alpha and beta tubulin genes and they are highly conserved among and between species. This gene encodes an alpha tubulin that is a highly conserved homolog of a rat testis-specific alpha tubulin. Alternatively spliced transcript variants encoding different isoforms have been found for this gene. [provided by RefSeq, Jun 2013]

Immunogen

A synthetic peptide of human alpha Tubulin

Gene ID

7277

Swiss Prot

P68366

Synonyms

ALS22; TUBA1; H2-ALPHA

Reactivity

Human, Mouse, Rat

Application

WB, IHC, ICC/IF, FC

Recommended dilution

WB: 1:1000-1:10000

IHC: 1:200

ICC/IF: 1:200-1:500

FC: 1:20

Calculated MW

50 kDa

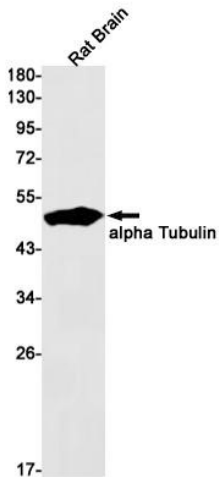
Observed MW

50 kDa

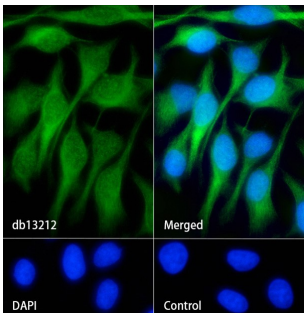
Host species

Rabbit

Clonality	Monoclonal
Clonality No.	DGR14189
Isotype	IgG
Purity	Affinity Purification
Conjugation	Un-conjugated
Concentration	1 mg/ml
Formulation	PBS Only
Storage Stability	Store at -20°C. Recommended to aliquot into single-use vials. Supplied in 1X PBS (pH 7.4). BSA and Azide Free. Stable for 12 months from date of receipt.



Western blot detection of alpha Tubulin in Rat Brain lysates using [db13212](#)(1:1000 diluted).



Immunofluorescence analysis of HeLa cells labelling alpha Tubulin with db13212.

The cells were fixed with cold 100% methanol (10min, 4°C) and blocked in 1% BSA/10% normal goat serum/0.3M glycine in 0.1% PBS-Tween 20 for 1h. The cells were then incubate with db13212 (1:200) at room temprature for 1h, followed by a further incubation at room temperature for 45min with Goat Anti Rabbit IgG (H+L)-AF488 ([db10005](#), shown in green). Nuclear DNA was labeled in blue with DAPI.

Control: Secondary antibody only.