

Recombinant

DGRmAb®

**Actin (DGR13895) Rabbit mAb (PBS Only)**

db14040-PBS

Package : 10µg 100µg

**Product Name** : Actin (DGR13895) Rabbit mAb (PBS Only)**Cat.No.:** db14040-PBS**Synonyms** : ACTA; ASMA; CFTD; MPFD; NEM1; NEM2; NEM3; SHPM; CFTD1; CFTDM**Application** : WB, IHC-P, ICC/IF, FC, IP**Reactivity** : Human,Mouse,Rat**Host species** : Rabbit**Background**

The product encoded by this gene belongs to the actin family of proteins, which are highly conserved proteins that play a role in cell motility, structure and integrity. Alpha, beta and gamma actin isoforms have been identified, with alpha actins being a major constituent of the contractile apparatus, while beta and gamma actins are involved in the regulation of cell motility. This actin is an alpha actin that is found in skeletal muscle. Mutations in this gene cause nemaline myopathy type 3, congenital myopathy with excess of thin myofilaments, congenital myopathy with cores, and congenital myopathy with fiber-type disproportion, diseases that lead to muscle fiber defects. [provided by RefSeq, Jul 2008]

**Immunogen**

A synthetic peptide of human Actin

**Gene ID**

58

**Swiss Prot**

P68133

**Synonyms**

ACTA; ASMA; CFTD; MPFD; NEM1; NEM2; NEM3; SHPM; CFTD1; CFTDM

**Reactivity**

Human,Mouse,Rat

**Application**

WB, IHC-P, ICC/IF, FC, IP

**Calculated MW**

42 kDa

**Observed MW**

42 kDa

**Host species**

Rabbit

**Clonality**

Monoclonal

**Clonality No.**

DGR13895

**Isotype**

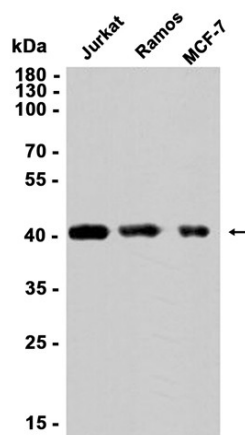
IgG

**Purity**

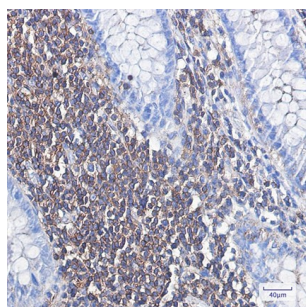
Affinity Purification

<b>Conjugation</b>	Un-conjugated
<b>Concentration</b>	1 mg/mL
<b>Formulation</b>	PBS Only
<b>Storage Stability</b>	Store at -20°C. Recommended to aliquot into single-use vials. Supplied in 1X PBS (pH 7.4). BSA and Azide Free. Stable for 12 months from date of receipt.

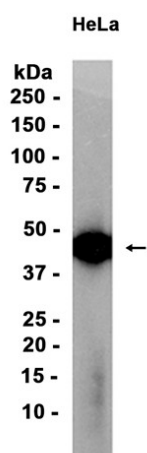
Western blot analysis of extracts from Jurkat, Ramos, MCF-7 cells using [db14040](#) at 1:1000.

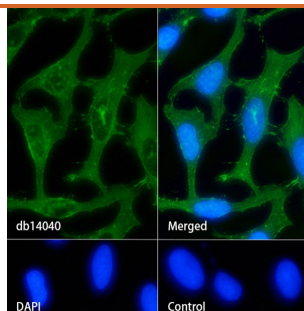


Immunohistochemical analysis of paraffin-embedded human colon cancer using [db14040](#) antibody.



Western blot analysis of extracts from HeLa cells using [db14040](#) at 1:1000.





Immunofluorescence analysis of HeLa cells labelling Actin with [db14040](#).

The cells were fixed with cold 100% methanol (10min, 4°C) and blocked in 1% BSA/10% normal goat serum/0.3M glycine in 0.1% PBS-Tween 20 for 1h. The cells were then incubate with [db14040](#) (1:50) at room temprature for 1h, followed by a further incubation at room temperature for 45min with Goat Anti Rabbit IgG (H+L)-AF488 ([db10005](#), shown in green). Nuclear DNA was labeled in blue with DAPI.

Control: Secondary antibody only.