

Recombinant

DGRmAb®

METTL3 (DGR11429) Rabbit mAb (PBS Only)

db15992-PBS

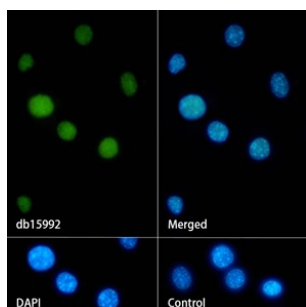
Package : 10µg 100µg

Product Name : METTL3 (DGR11429) Rabbit mAb (PBS Only)**Cat.No.:** db15992-PBS**Synonyms** : M6A; IME4; Spo8; MT-A70; hMETTL3**Application** : WB, IHC, ICC/IF, FC, IP**Reactivity** : Human, Mouse, Rat**Host species** : Rabbit

Background	This gene encodes the 70 kDa subunit of MT-A which is part of N6-adenosine-methyltransferase. This enzyme is involved in the posttranscriptional methylation of internal adenosine residues in eukaryotic mRNAs, forming N6-methyladenosine. [provided by RefSeq, Jul 2008]
Immunogen	Recombinant protein of human METTL3
Gene ID	56339
Swiss Prot	Q86U44
Synonyms	M6A; IME4; Spo8; MT-A70; hMETTL3
Reactivity	Human, Mouse, Rat
Application	WB, IHC, ICC/IF, FC, IP
Calculated MW	64 kDa
Observed MW	64 kDa
Host species	Rabbit
Clonality	Monoclonal
Clonality No.	DGR11429
Isotype	IgG
Purity	Affinity Purification
Conjugation	Un-conjugated
Concentration	1 mg/mL
Formulation	PBS Only

Storage Stability

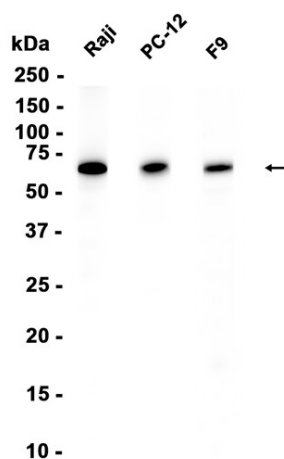
Store at -20°C. Recommended to aliquot into single-use vials. Supplied in 1X PBS (pH 7.4). BSA and Azide Free. Stable for 12 months from date of receipt.



Immunofluorescence analysis of NIH/3T3 cells labelling METTL3 with [db15992](#).

The cells were fixed with 4% PFA (10min, RT) followed by treatment with 0.1% Triton X-100 (10min, RT), and blocked in 1% BSA/10% normal goat serum/0.3M glycine in 0.1% PBS-Tween 20 for 1h. The cells were then incubate with [db15992](#)(1:500) at room temperature for 1h, followed by a further incubation at room temperature for 45min with Goat Anti Rabbit IgG (H+L)-AF488 [db10005](#), shown in green). Nuclear DNA was labeled in blue with DAPI.

Control: Secondary antibody only.



Western blot analysis of extracts from Raji,PC-12,F9 cells using [db15992](#) at 1:1000.