

Recombinant

DGRmAb®

## GPR 139 (DGR14988) Rabbit mAb (PBS Only)

db15173-PBS

Package : 100µg

**Product Name :** GPR 139 (DGR14988) Rabbit mAb (PBS Only)**Cat.No.:** db15173-PBS**Synonyms :** PGR3; GPRg1**Application :** WB**Reactivity :** Human,Mouse,Rat**Host species :** Rabbit**Background**

This gene encodes a member of the rhodopsin family of G-protein-coupled receptors. The encoded protein is almost exclusively expressed in the central nervous system. L-tryptophan and L-phenylalanine may act as the physiologic ligands of the encoded protein. Alternative splicing results in multiple transcript variants. [provided by RefSeq, Jan 2016]

**Immunogen**

A synthetic peptide of human GPR 139

**Gene ID**

124274

**Swiss Prot**

Q6DWJ6

**Synonyms**

PGR3; GPRg1

**Reactivity**

Human,Mouse,Rat

**Application**

WB

**Recommended dilution**

WB: 1:1000-1:5000

**Calculated MW**

41 kDa

**Observed MW**

45-50 kDa

**Host species**

Rabbit

**Clonality**

Monoclonal

**Clonality No.**

DGR14988

**Isotype**

IgG

**Purity**

Affinity Purification

**Conjugation**

Un-conjugated

**Concentration**

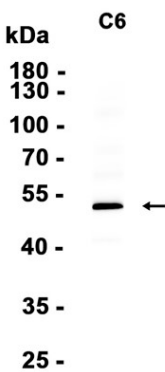
1 mg/ml

Formulation

PBS Only

Storage Stability

Store at -20°C. Recommended to aliquot into single-use vials. Supplied in 1X PBS (pH 7.4). BSA and Azide Free. Stable for 12 months from date of receipt.



Western blot analysis of extracts from C6 cells using [db15173](#)