

Recombinant

DGRmAb®

**BRG1 (DGR14531) Rabbit mAb (PBS Only)**

db11111-PBS

Package : 100µg

**Product Name :** BRG1 (DGR14531) Rabbit mAb (PBS Only)**Cat.No.:** db11111-PBS**Synonyms :** Brg1; SW1/SNF; HP1-BP72; SNF2beta; b2b692Clo; b2b508.1Clo**Application :** WB, IHC-P, ICC/IF, FC, IP**Reactivity :** Human,Mouse,Rat**Host species :** Rabbit**Background**

Transcriptional coactivator cooperating with nuclear hormone receptors to potentiate transcriptional activation. Component of the CREST-BRG1 complex, a multiprotein complex that regulates promoter activation by orchestrating a calcium-dependent release of a repressor complex and a recruitment of an activator complex. In resting neurons, transcription of the c-FOS promoter is inhibited by BRG1-dependent recruitment of a phospho-RB1-HDAC repressor complex. Upon calcium influx, RB1 is dephosphorylated by calcineurin, which leads to release of the repressor complex. At the same time, there is increased recruitment of CREBBP to the promoter by a CREST-dependent mechanism, which leads to transcriptional activation. The CREST-BRG1 complex also binds to the NR2B promoter, and activity-dependent induction of NR2B expression involves a release of HDAC1 and recruitment of CREBBP (By similarity).

**Immunogen**

A synthetic peptide of mouse BRG1

**Gene ID**

20586

**Swiss Prot**

Q3TKT4

**Synonyms**

Brg1; SW1/SNF; HP1-BP72; SNF2beta; b2b692Clo; b2b508.1Clo

**Reactivity**

Human,Mouse,Rat

**Application**

WB, IHC-P, ICC/IF, FC, IP

**Recommended dilution**

WB: 1:2000-1:20000

IHC-P: 1:100-1:200

ICC/IF: 1:200-1:500

FC: 1:100-1:200

IP: 1:10-1:100

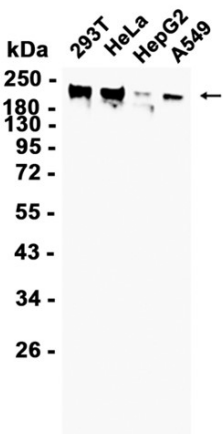
**Calculated MW**

185 kDa

**Observed MW**

220 kDa

Host species	Rabbit
Clonality	Monoclonal
Clonality No.	DGR14531
Isotype	IgG
Purity	Affinity Purification
Conjugation	Un-conjugated
Concentration	1 mg/ml
Formulation	PBS Only
Storage Stability	Store at -20°C. Recommended to aliquot into single-use vials. Supplied in 1X PBS (pH 7.4). BSA and Azide Free. Stable for 12 months from date of receipt.



Western blot analysis of extracts from 293T,HeLa,HepG2,A549 cells using [db11111](#)